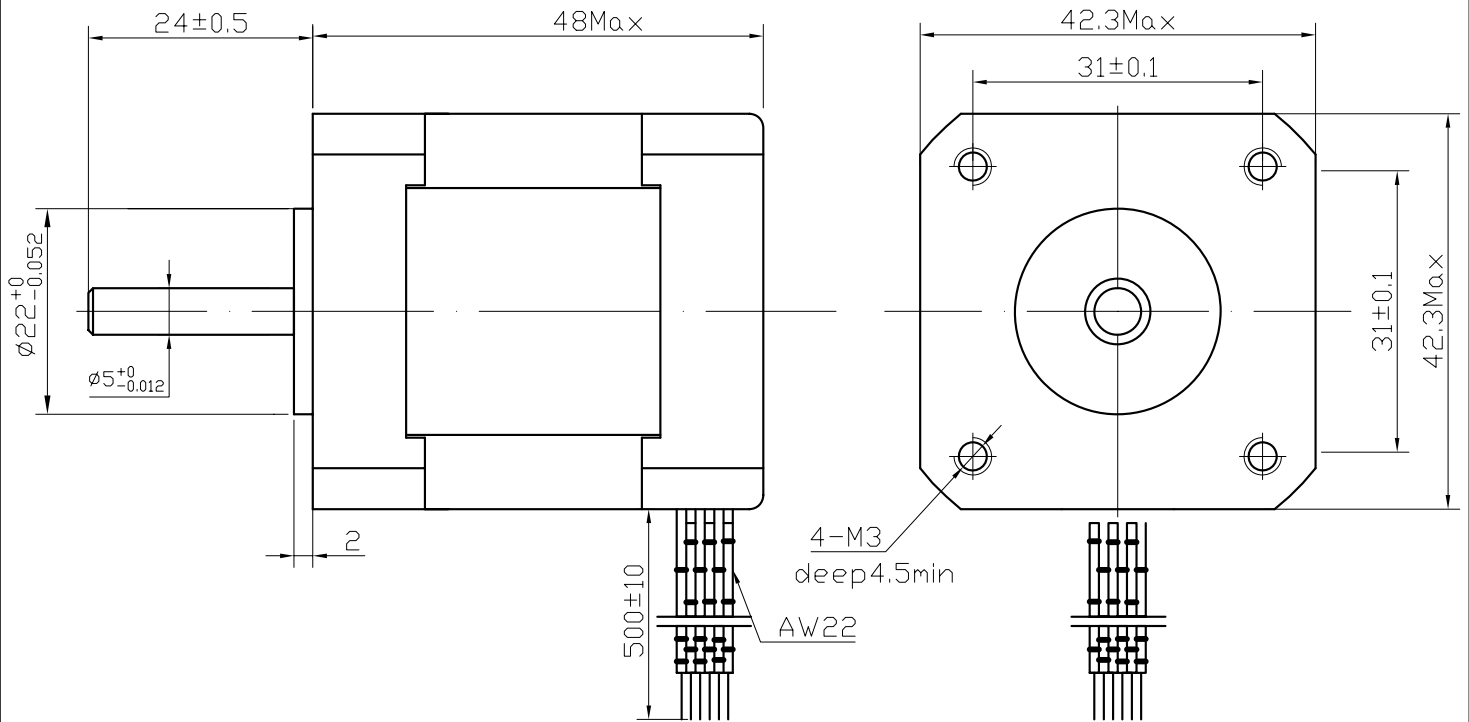


# STEPPING MOTORS TYPE 42BHH48W-200-24

SPECIFICATIONS				WIRING DIAGRAM
STEP ANGLE	1.8°±5%	VOLTAGE	3.0V	<p>红 A RED</p> <p>绿 C GRN</p> <p>B YEL 黄</p> <p>D BLU 蓝</p>
NO. of PHASE	2	CURRENT/PHASE	2.0A	
Inultion Resistant	100MΩ(500VDC)	INDUCTANCE/PHASE	3.0±20%.mH	
Ambient Temperature	-35~40℃	RESISTANCE/PHASE	1.5±10%.Ω	
Operate_Temperature	110℃ Max	HOLDING_TORQUE	4.3kg.cm	
WEIGHT	0.24kg Max			

FIGURE

UNIT:mm

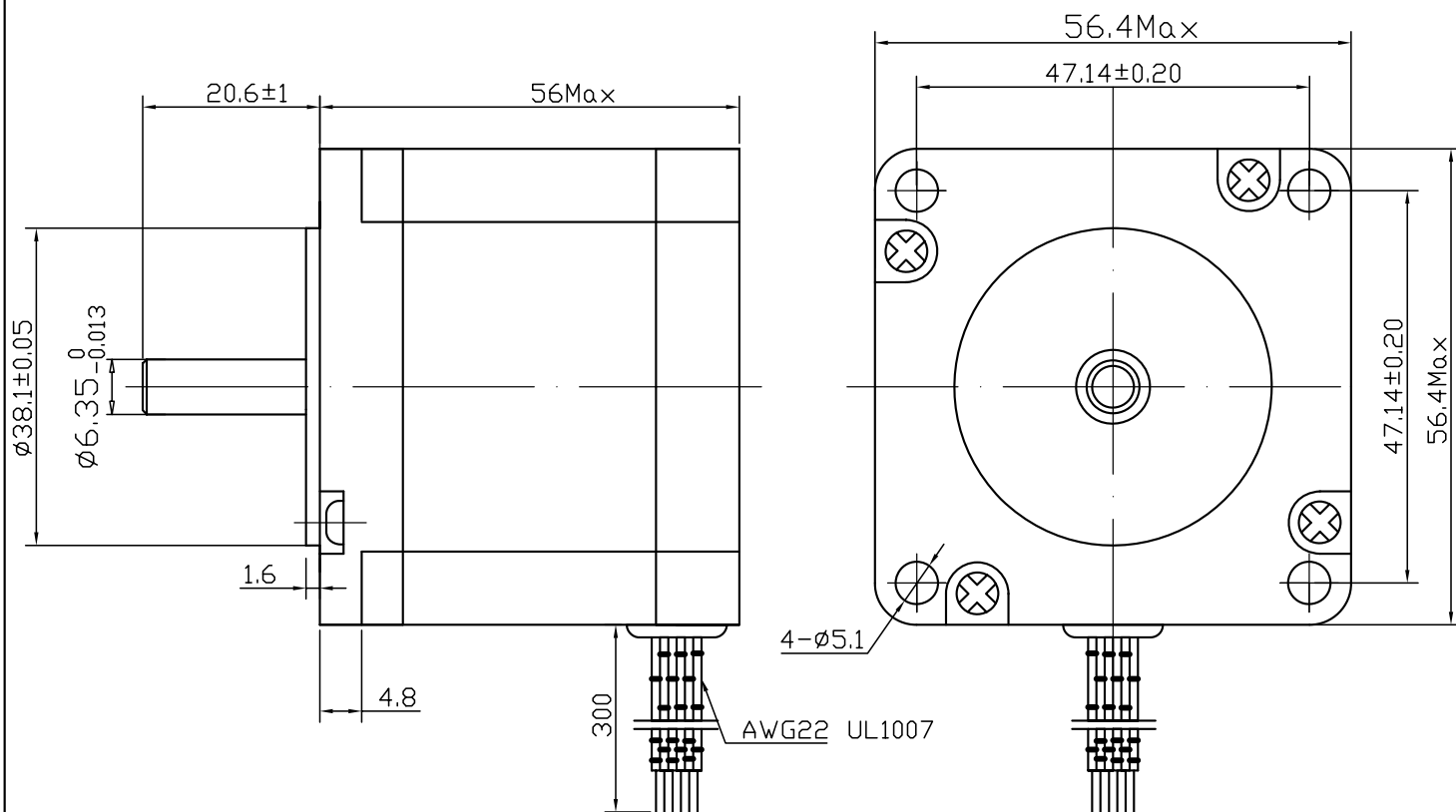


# STEPPING MOTORS TYPE 57BHH56-106A-21

SPECIFICATIONS				WIRING DIAGRAM
STEP ANGLE	1.8°±5%	VOLTAGE	7.4V	
NO. of PHASE	4	CURRENT/PHASE	1.0A	
Inultion Resistant	100MΩ(500VDC)	INDUCTANCE/PHASE	10±20% mH	
Ambient Temperature	-35~40 °C	RESISTANCE/PHASE	7.4±10% Ω	
Operate_Temperature	110 °C Max	HOLDING_TORQUE	9.0kg.cm	
WEIGHT	0.7kg Max			

FIGURE

UNIT:mm

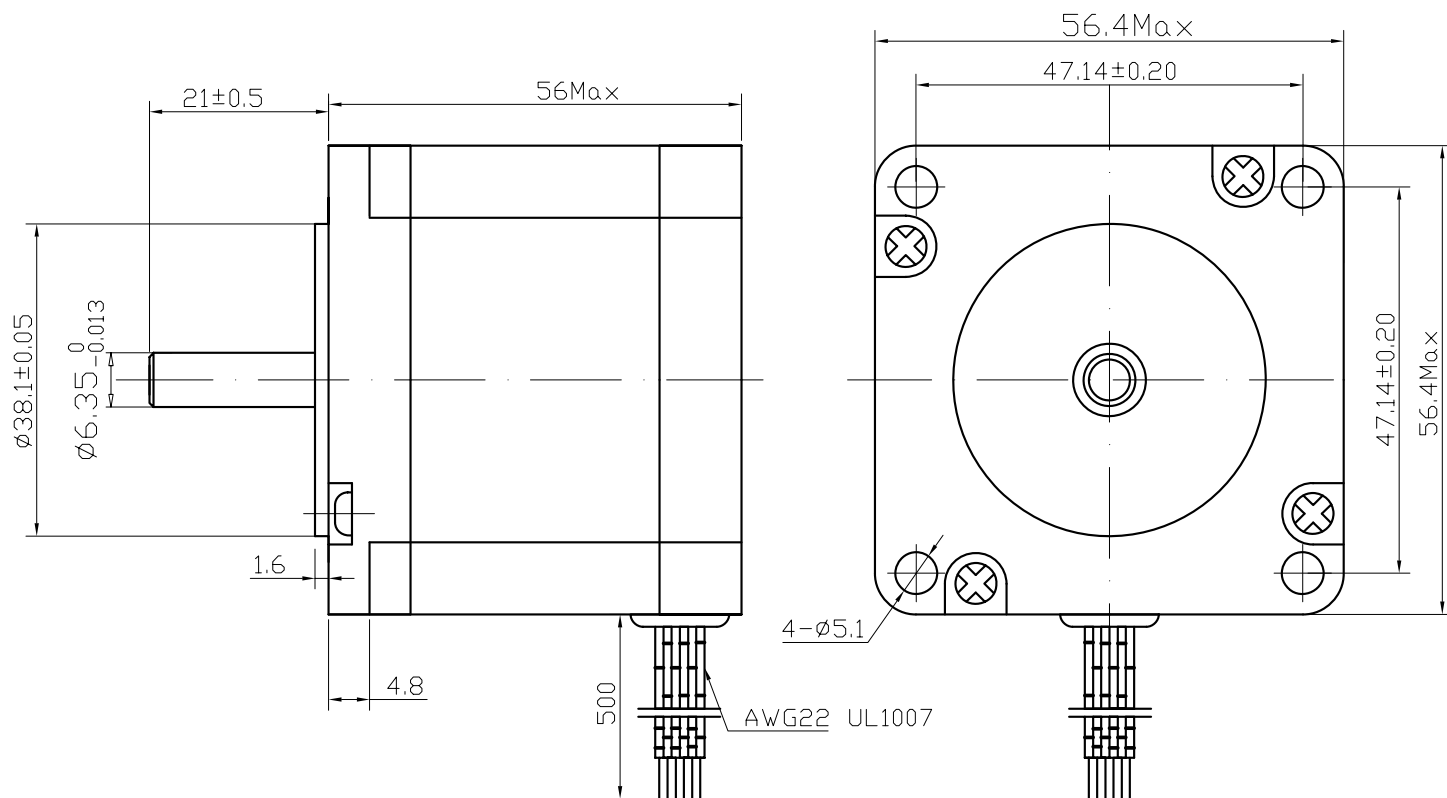


# STEPPING MOTORS TYPE 57BHH56-195B-21

SPECIFICATIONS				WIRING DIAGRAM
STEP ANGLE	1.8°±5%	VOLTAGE	2.8V	
NO. of PHASE	2	CURRENT/PHASE	2.0A	
Inultion Resistant	100MΩ(500VDC)	INDUCTANCE/PHASE	4.2±20% mH	
Ambient Temperature	-35~40 °C	RESISTANCE/PHASE	1.4±10% Ω	
Operate Temperature	110 °C Max	HOLDING TORQUE	8.2kg.cm	
WEIGHT	0.7kg Max			

FIGURE

UNIT:mm

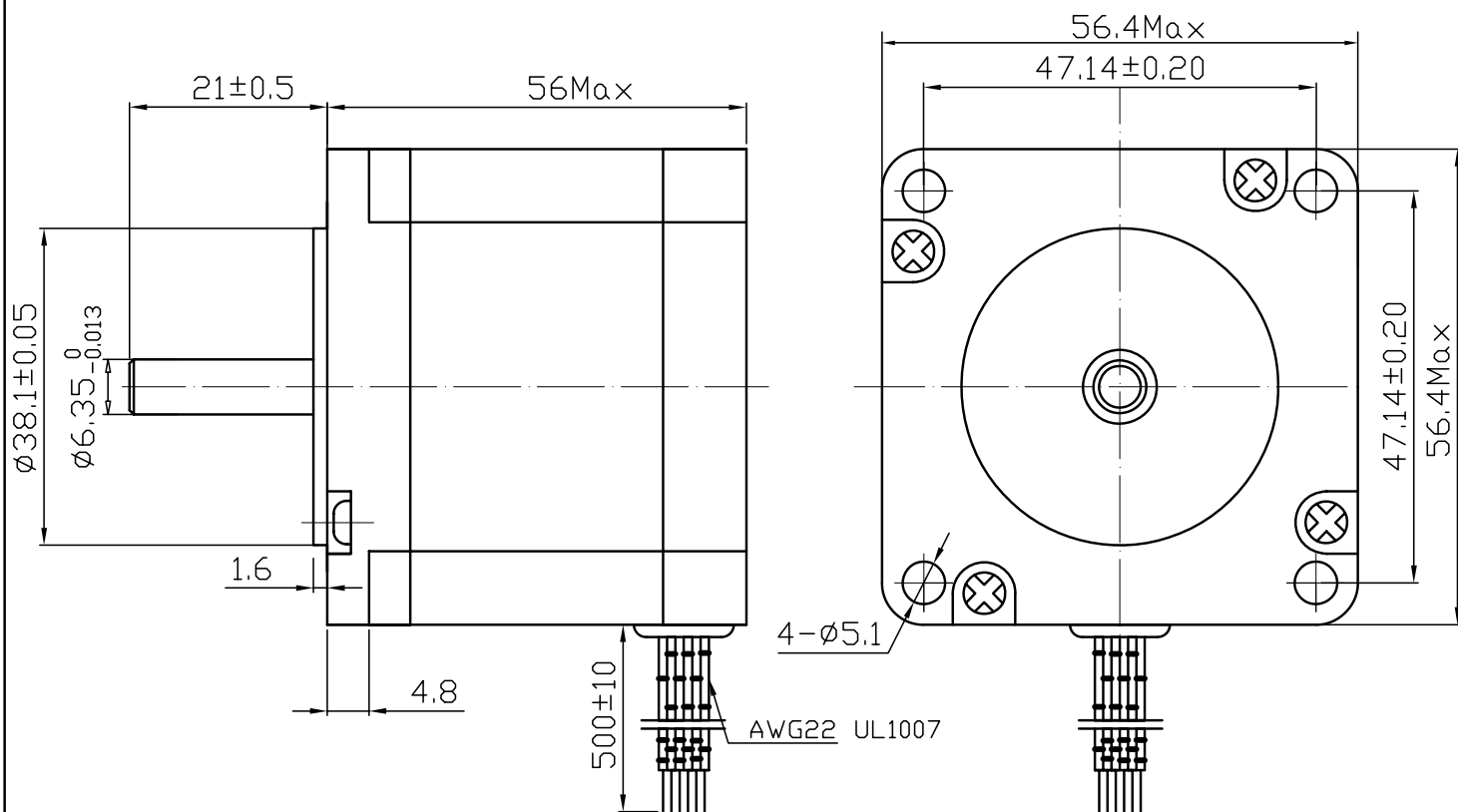


# STEPPING MOTORS TYPE 57BHM56-303D-21

SPECIFICATIONS				WIRING DIAGRAM
STEP ANGLE	0.9°±5%	VOLTAGE	2.4V	<p>紅 A RED</p> <p>綠 C GRN</p> <p>B YEL 黃</p> <p>D BLU 藍</p>
NO. of PHASE	2	CURRENT/PHASE	3.0A	
Inultion Resistant	100MΩ(500VDC)	INDUCTANCE/PHASE	1.2mH ±20%	
Ambient Temperature	-35~40 °C	RESISTANCE/PHASE	0.8Ω±10%	
Operate_Temperature	110 °C Max	HOLDING_TORQUE	7.8Kg. cm	
WEIGHT	0.7kg Max			

FIGURE

UNIT:mm

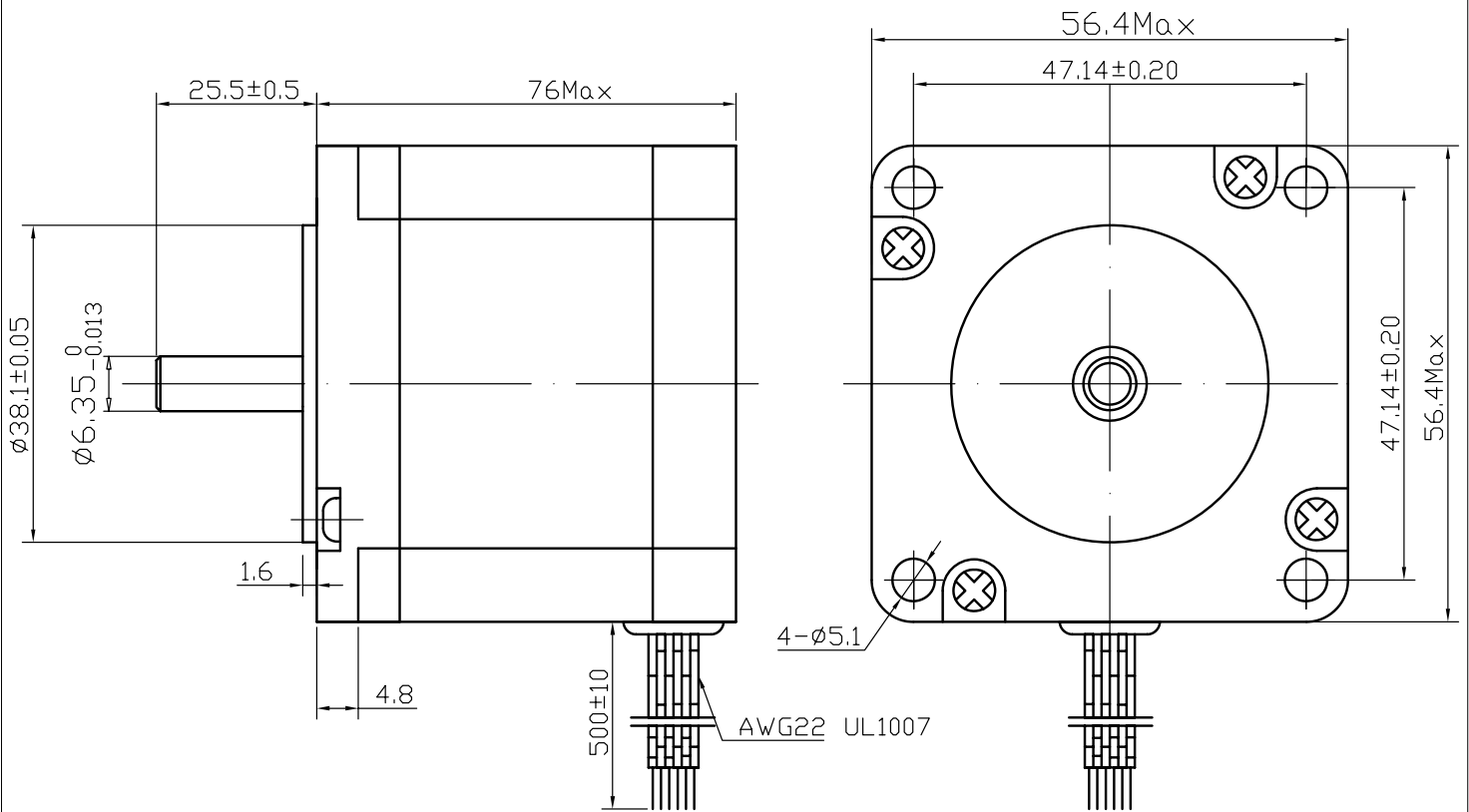


# STEPPING MOTORS TYPE 57BHH76-300D-25C

SPECIFICATIONS				WIRING DIAGRAM
STEP ANGLE	<b>1.8°±5%</b>	VOLTAGE	3.3V	
NO. of PHASE	<b>2</b>	CURRENT/PHASE	3.0A	
Inultion Resistant	<b>100MΩ(500VDC)</b>	INDUCTANCE/PHASE	2.3±20% <b>mH</b>	
Ambient Temperature	<b>-20~40 °C</b>	RESISTANCE/PHASE	1.1±10% <b>Ω</b>	
Operate_Temperature	<b>110 °C Max</b>	HOLDING_TORQUE	15 <b>kg.cm</b>	
WEIGHT	<b>1.1kg Max</b>			

FIGURE

UNIT:mm

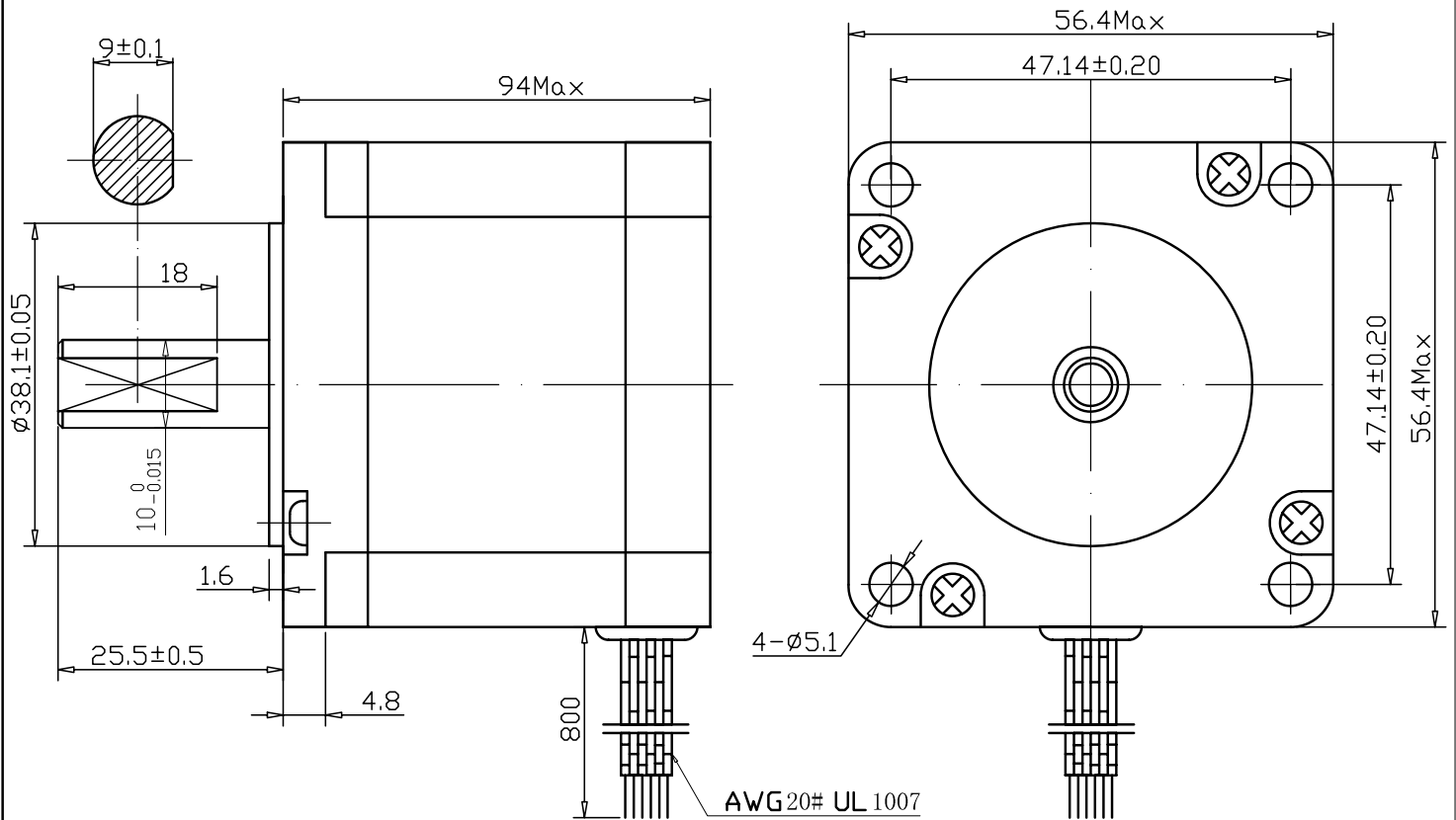


# STEPPING MOTORS TYPE 57BHH94-400B-26B

SPECIFICATIONS				WIRING DIAGRAM
STEP ANGLE	<b>1.8°±5%</b>	VOLTAGE	3.2V	
NO. of PHASE	<b>2</b>	CURRENT/PHASE	4.0A	
Inultion Resistant	<b>100MΩ(500VDC)</b>	INDUCTANCE/PHASE	2.8±20% mH	
Ambient Temperature	-35~40℃	RESISTANCE/PHASE	0.8±10% Ω	
Operate Temperature	110℃ Max	HOLDING_TORQUE	25.0Kg.cm	
WEIGHT	1.8kg Max			

## FIGURE

UNIT:mm

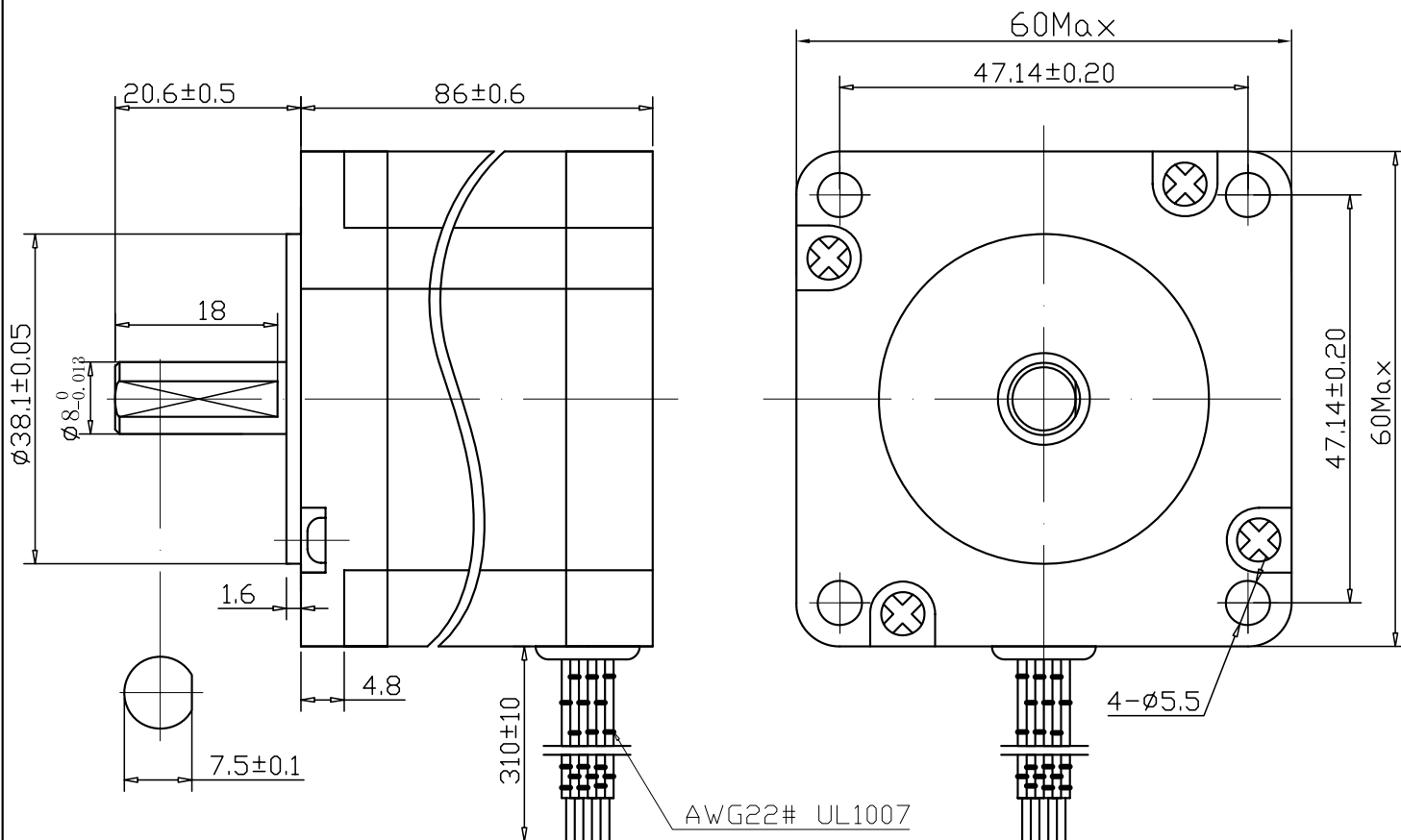


# STEPPING MOTORS TYPE 60BHH86-300B-21C

SPECIFICATIONS				WIRING DIAGRAM
STEP ANGLE	1.8°±5%	VOLTAGE	4.8V	
NO. of PHASE	2	CURRENT/PHASE	3.0A	
Inultion Resistant	100MΩ(500VDC)	INDUCTANCE/PHASE	8.4±20% mH	
Ambient Temperature	-35~40 °C	RESISTANCE/PHASE	1.6±10% Ω	
Operate_Temperature	110 °C Max	HOLDING_TORQUE	35kg.cm	
WEIGHT	1.4kg Max			

## FIGURE

UNIT:mm

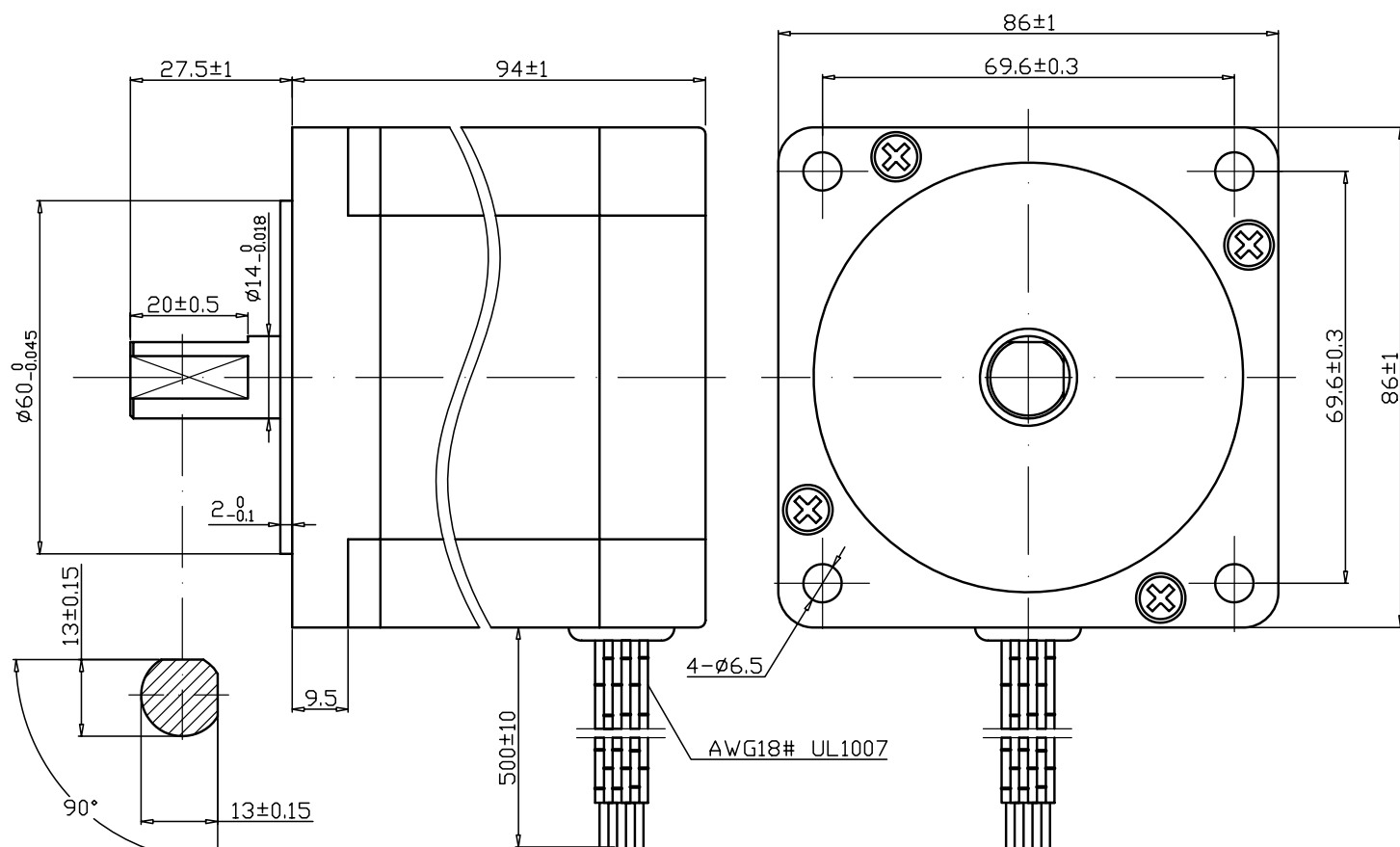


# STEPPING MOTORS TYPE 86BHH94-400B-28B

SPECIFICATIONS				WIRING DIAGRAM	
STEP ANGLE	1.8°±5%	VOLTAGE	1.8V		
NO. of PHASE	2	CURRENT/PHASE	4.0 A		
Inultion Resistant	100MΩ(500VDC)	INDUCTANCE/PHASE	3.6mh		
Ambient Temperature	-35~40 °C	RESISTANCE/PHASE	0.45 Ω		
Operate_Temperature	110 °C Max	HOLDING_TORQUE	36kg.cm		
WEIGHT	2.9kg				

## FIGURE

UNIT:mm



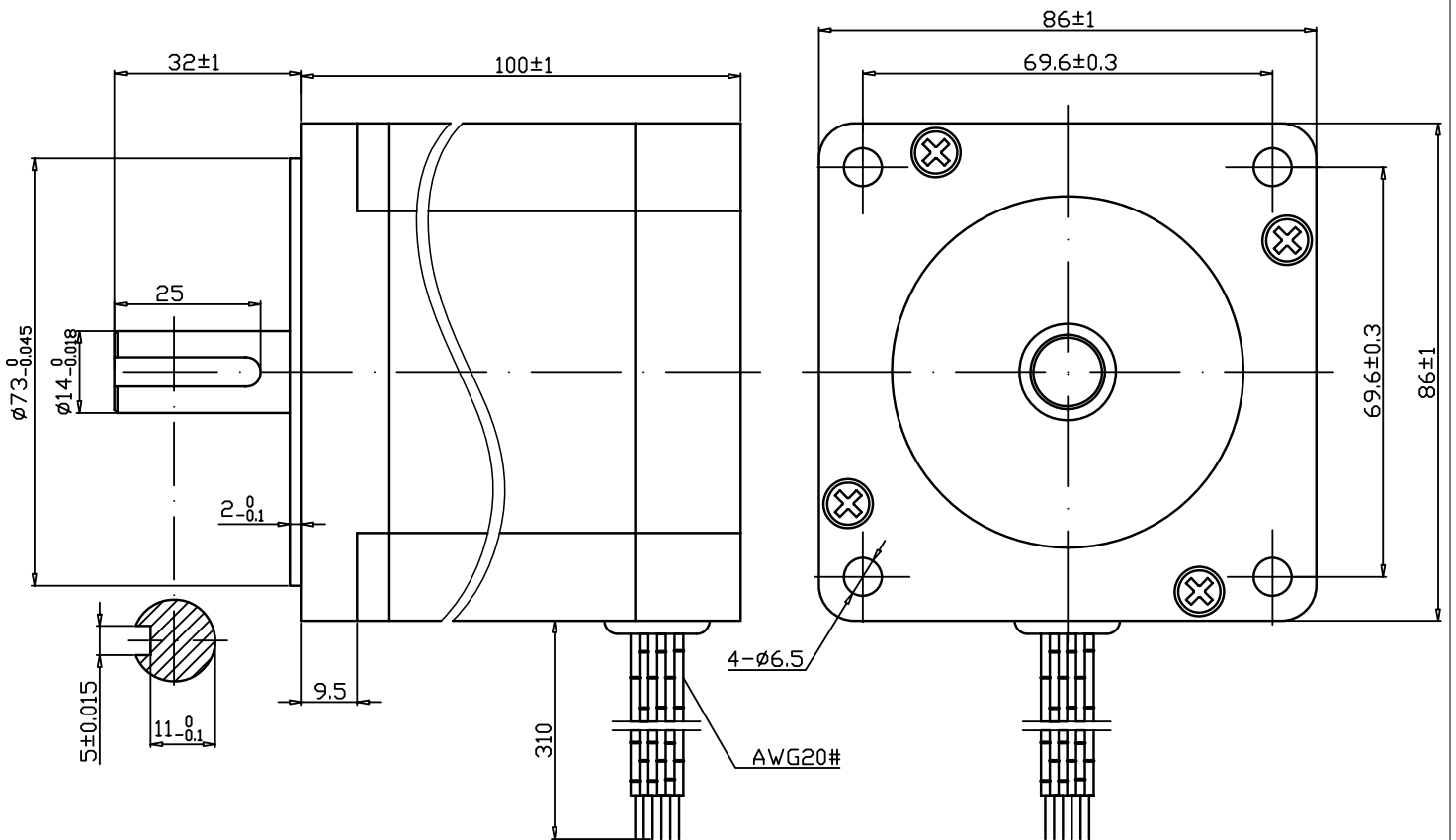


# STEPPING MOTORS TYPE 86BHH100-500B-18A

SPECIFICATIONS				WIRING DIAGRAM	
STEP ANGLE	1.8°±5%	VOLTAGE	2.5V	红 A RED	
NO. of PHASE	2	CURRENT/PHASE	5.0A	绿 C GRN	
Inultion Resistant	100MΩ(500VDC)	INDUCTANCE/PHASE	4.2mH±20%		
Ambient Temperature	-35~40℃	RESISTANCE/PHASE	0.5Ω±10%		
Operate_Temperature	110℃ Max	HOLDING_TORQUE	52Kgf.cm		
WEIGHT	3.0kg Max				

FIGURE

UNIT:mm

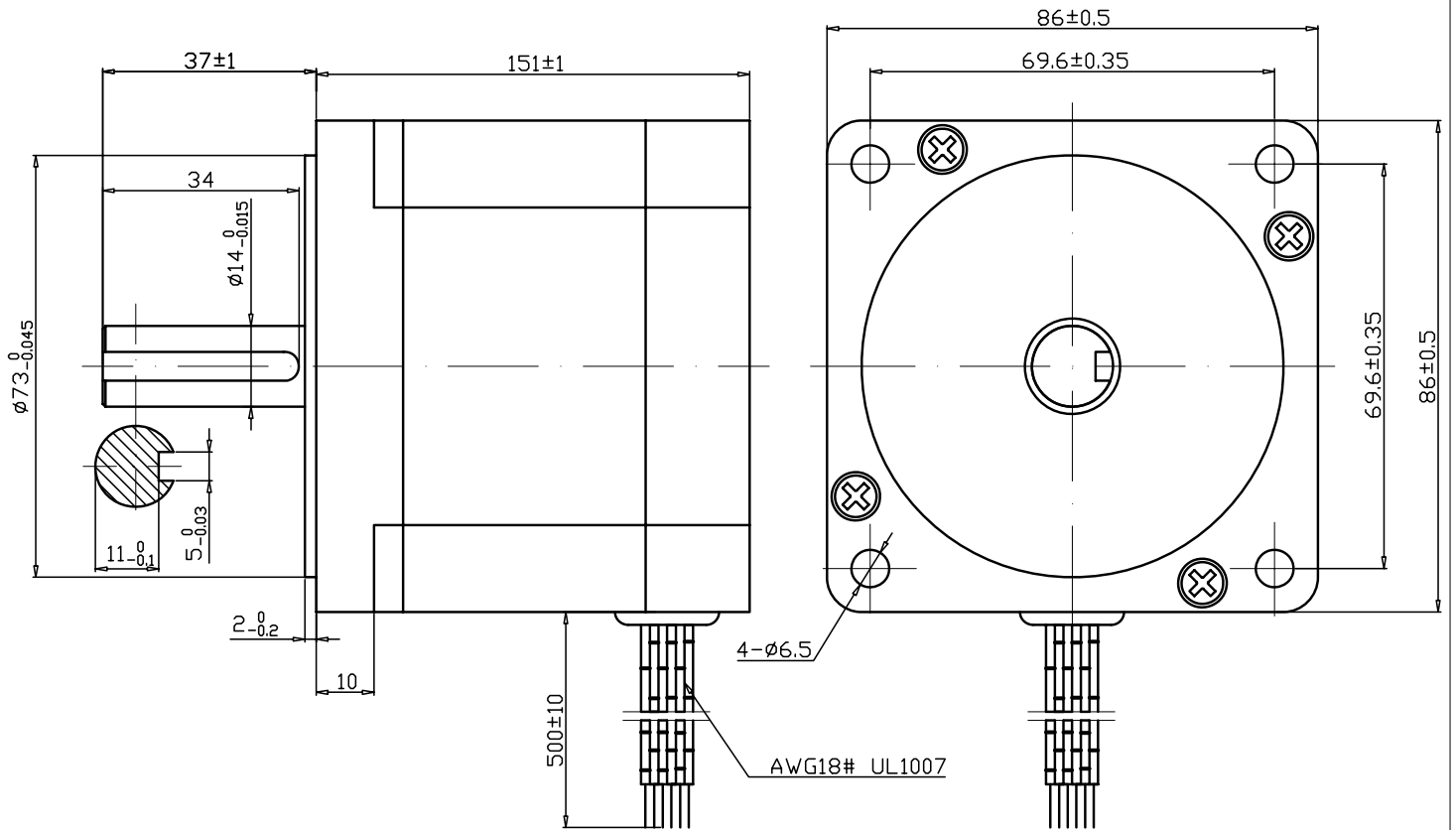


# STEPPING MOTORS TYPE 86BHH150-600-37J

SPECIFICATIONS				WIRING DIAGRAM
STEP ANGLE	<b>1.8°±5%</b>	VOLTAGE	1.8V	
NO. of PHASE	<b>2</b>	CURRENT/PHASE	6.0A	
Inultion Resistant	<b>100MΩ(500VDC)</b>	INDUCTANCE/PHASE	3.0mh ±20%	
Ambient Temperature	<b>-35~40 °C</b>	RESISTANCE/PHASE	0.3Ω ± 10%	
Operate_Temperature	<b>110 °C Max</b>	HOLDING_TORQUE	7.2N.m	
WEIGHT	<b>5.3kg max</b>			

## FIGURE

UNIT:mm



# STEPPING MOTORS TYPE 110BHH154-650A-55

SPECIFICATIONS				WIRING DIAGRAM
STEP ANGLE	1.8°±5%	VOLTAGE	5.5V	
NO. of PHASE	2	CURRENT/PHASE	6.5A	
Inultion Resistant	100MΩ(500VDC)	INDUCTANCE/PHASE	16mH±20%	
Ambient Temperature	-35~40℃	RESISTANCE/PHASE	0.85Ω±10%	
Operate_Temperature	110℃ Max	HOLDING_TORQUE	21N.m	
WEIGHT	xxkg Max			

FIGURE

UNIT:mm

