

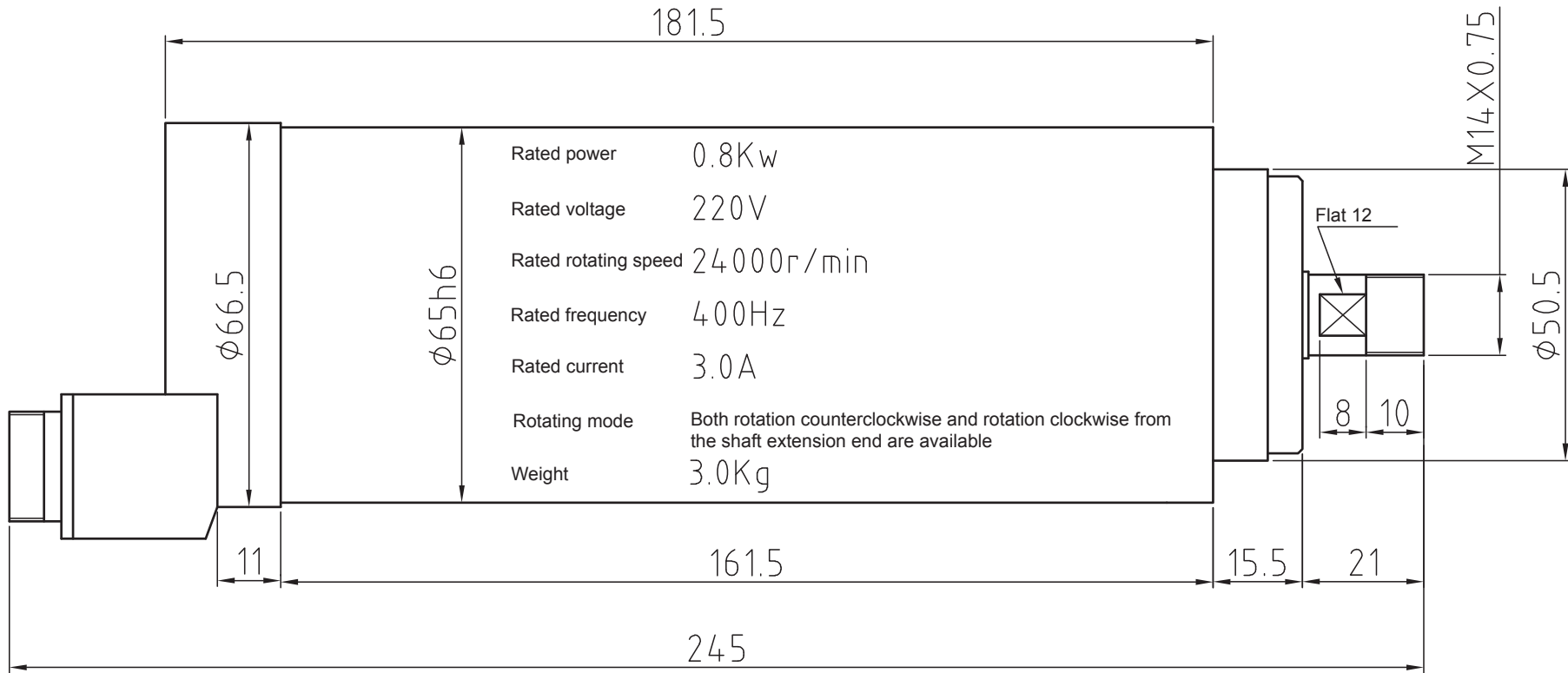
ТОВ "РЕФІТ"

ЕЛЕКТРОШПИНДЕЛІ HANQI GDF (повітряне охолодження)



засоби автоматизації і деталі машин до станків з ЧПУ

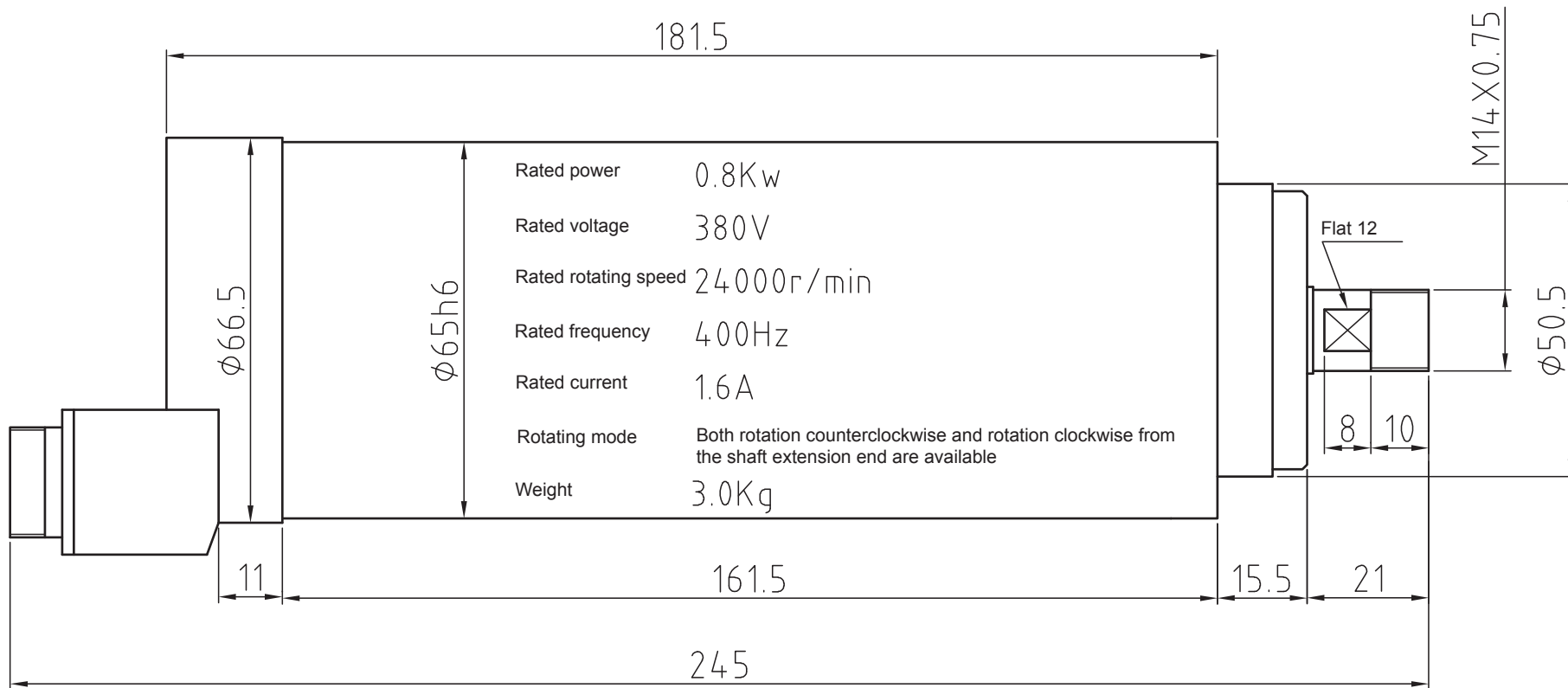
WWW.REFIT.COM.UA



Wiring description

Pin	4-pin socket
1	U frequency converter phase
2	V frequency converter phase
3	W frequency converter phase
4	Wiring ground

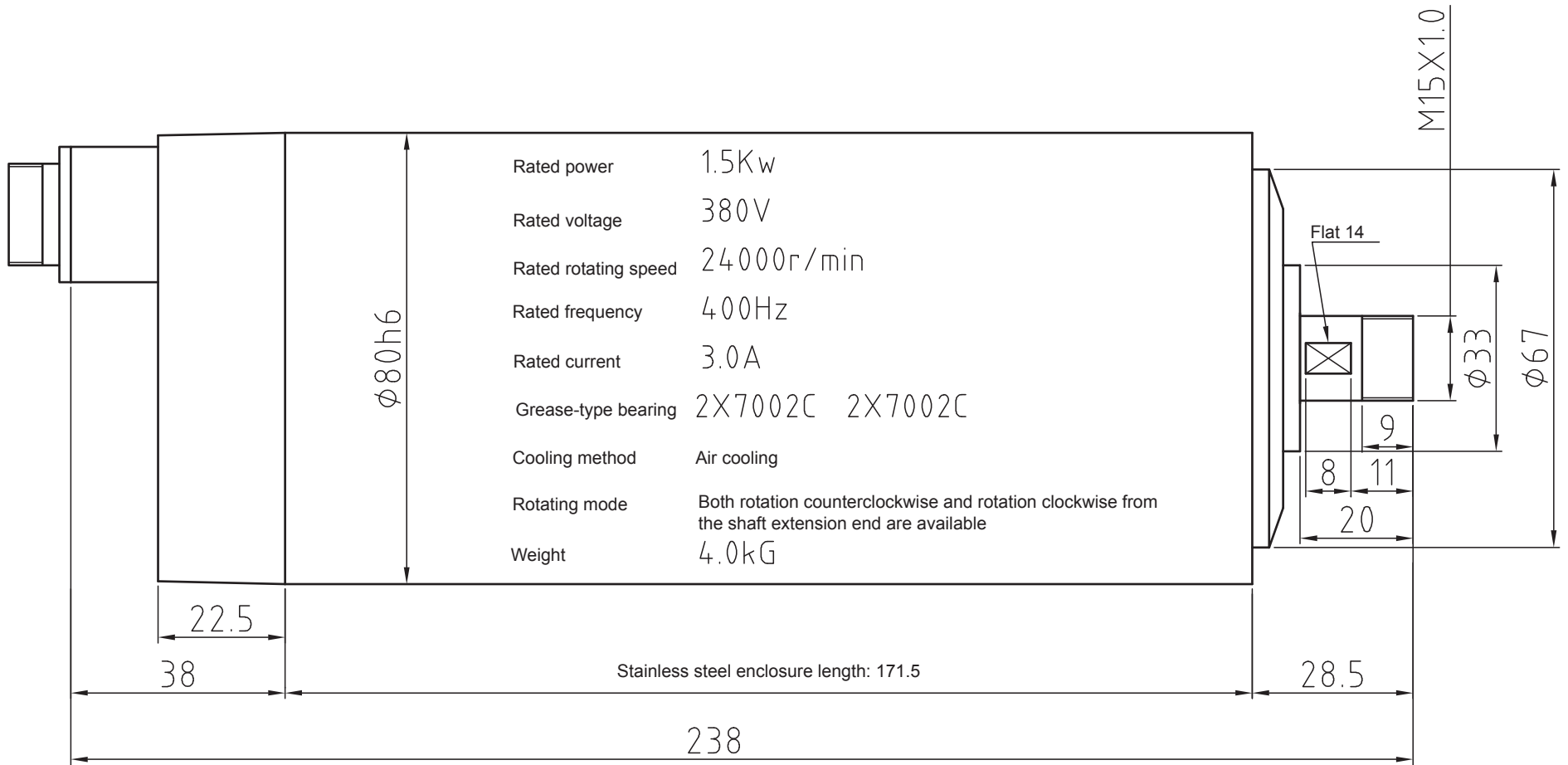
										220V
										Outline diagram
Marks	Number of places	Zoning	Modified document number	Signature	Date					GDF65-24Z/0.8
Designed by			Standardized by			Phase mark	Weight	Scale		
Reviewed by										
Processed by			Approved by			Total page(s)	Page			



Wiring description

Pin	4-pin socket
1	U frequency converter phase
2	V frequency converter phase
3	W frequency converter phase
4	Wiring ground

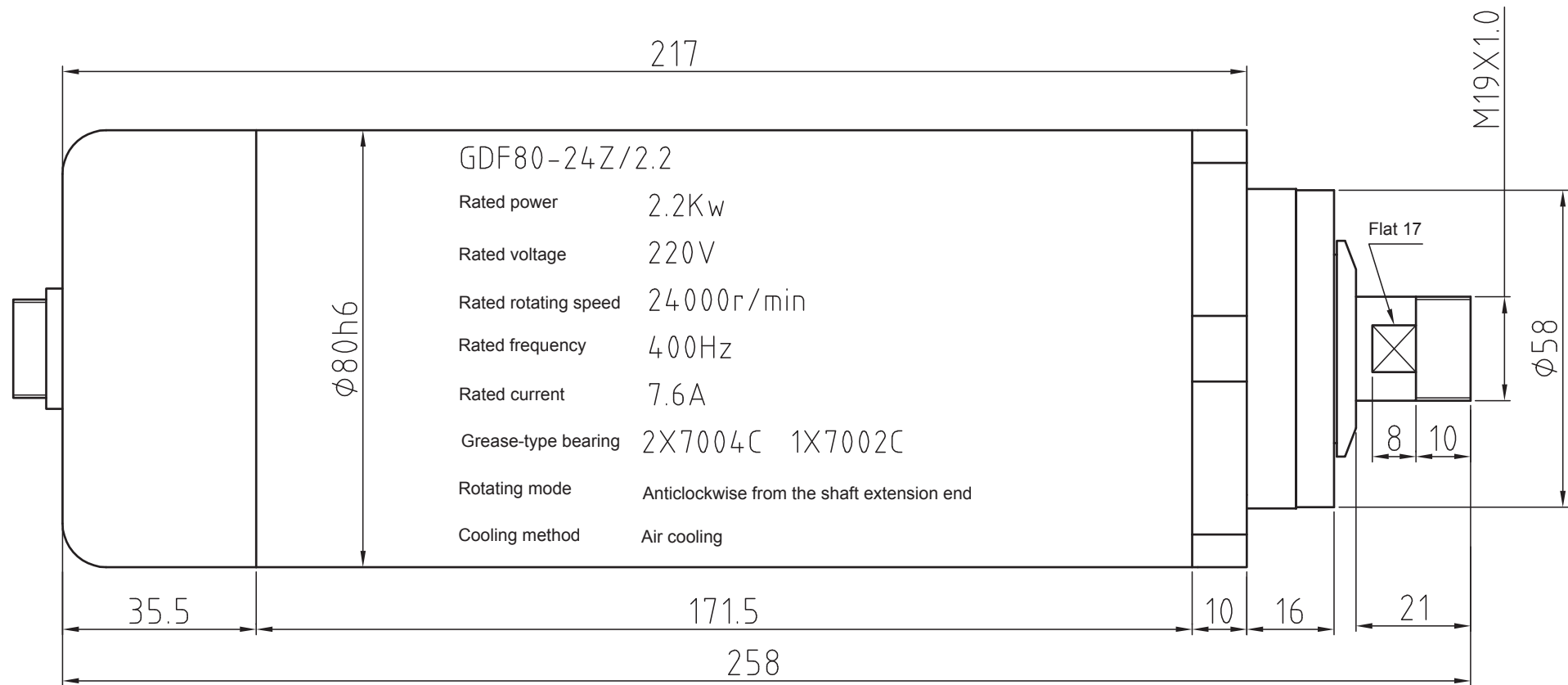
									380V
									Outline diagram
Marks	Number of places	Zoning	Modified document number	Signature	Date	Phase mark		Weight	Scale
Designed by			Standardized by						
Reviewed by									
Processed by			Approved by			Total page(s)		Page	
									GDF65-24Z/0.8



Wiring description

Pin	4-pin socket
1	U frequency converter phase
2	V frequency converter phase
3	W frequency converter phase
4	Wiring ground

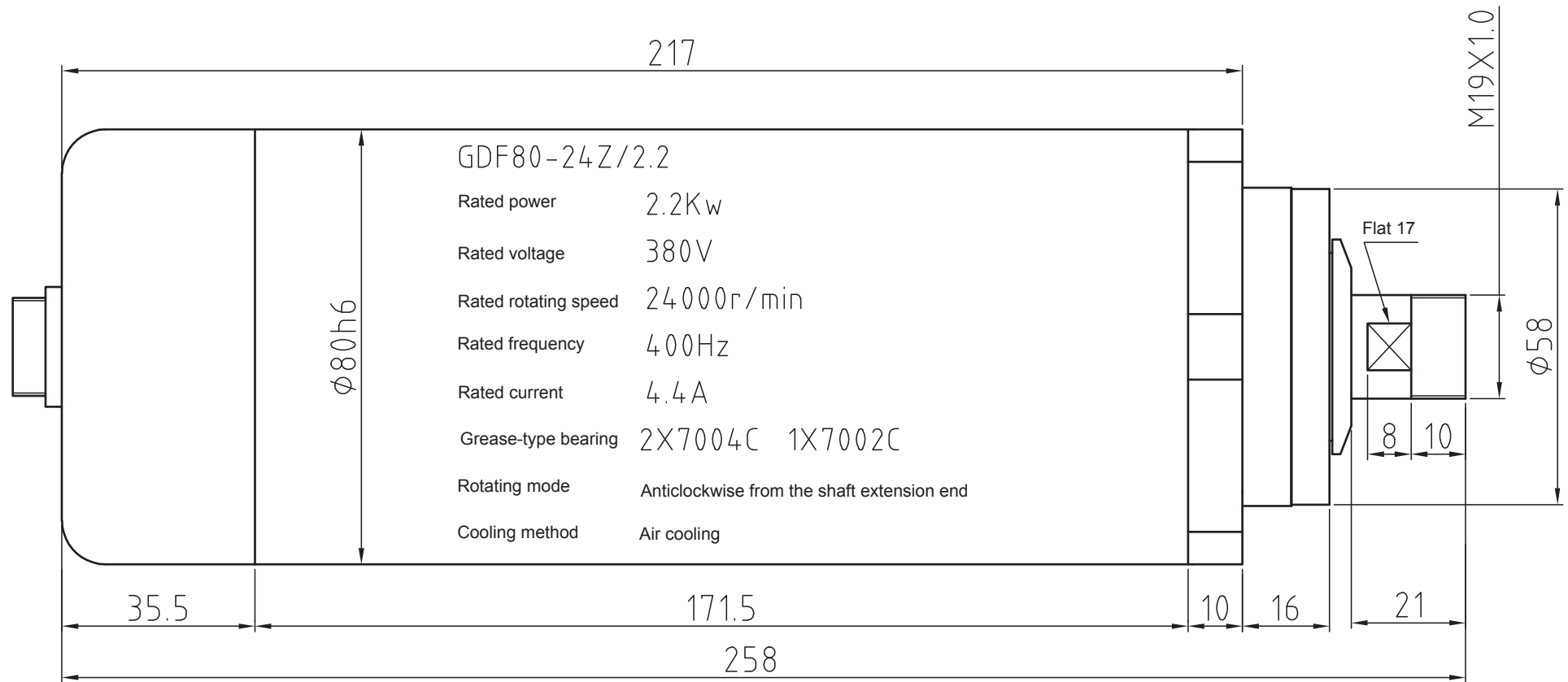
									380V		
									Outline diagram		
Marks	Number of places	Zoning	Modified document number	Signature	Date	Phase mark		Weight	Scale		GDF80-24Z/1.5
Designed by			Standardized by								
Reviewed by											
Processed by			Approved by			Total page(s)		Page			



Wiring description

Pin	4-pin socket
1	U frequency converter phase
2	V frequency converter phase
3	W frequency converter phase
4	Wiring ground

Marks	Number of places	Zoning	Modified document number	Signature	Date			
Designed by			Standardized by			Phase mark	Weight	Scale
Reviewed by								
Processed by			Approved by			Total page(s)	Page	
						220V		
						Outline diagram		
						GDF80-24Z/2.2		

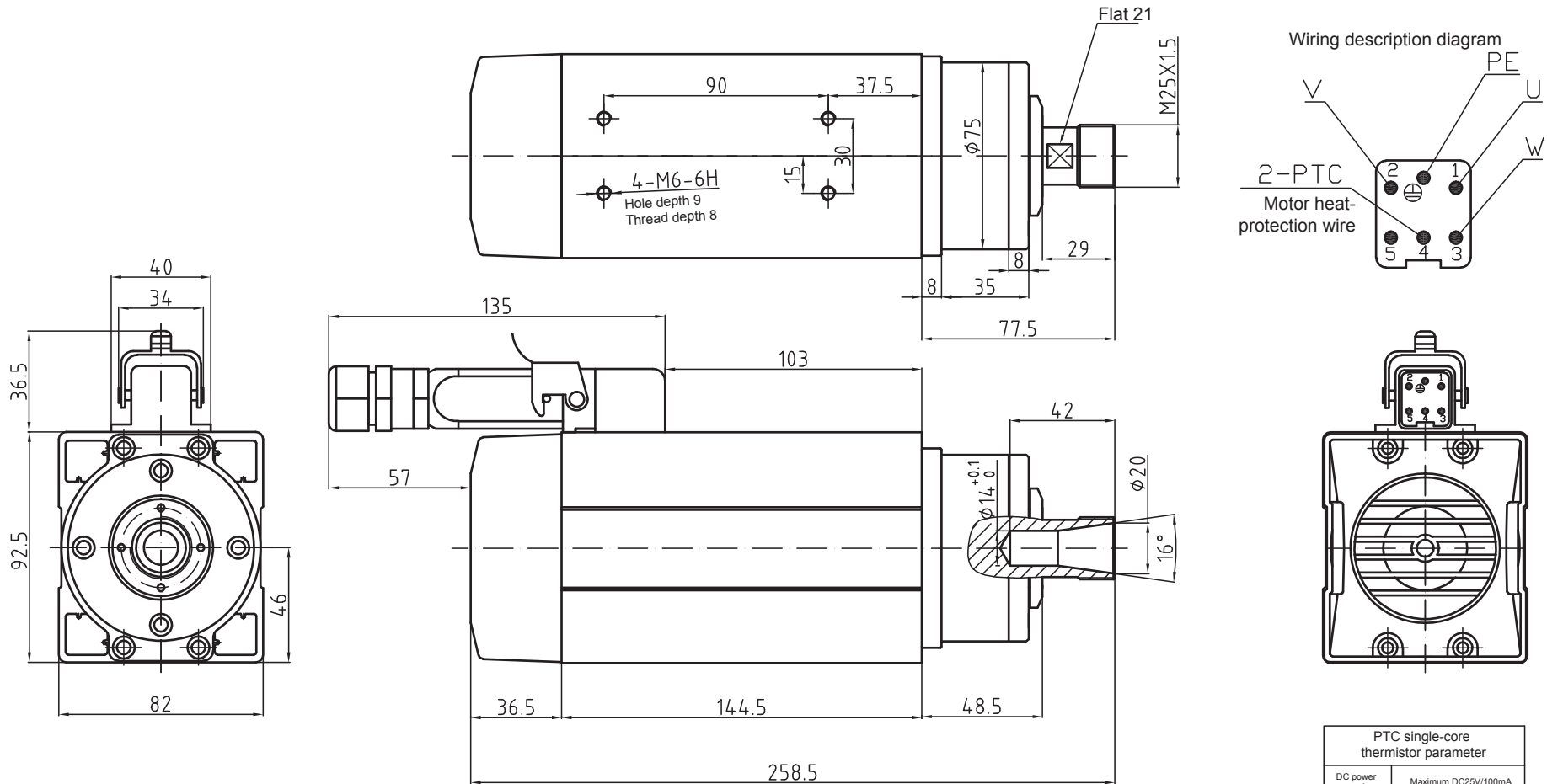


Wiring description

Pin	4-pin socket
1	U frequency converter phase
2	V frequency converter phase
3	W frequency converter phase
4	Wiring ground

									380V
									Outline diagram
Marks	Number of places	Zoning	Modified document number	Signature	Date			GDF80-24Z/2.2	
Designed by			Standardized by			Phase mark	Weight		Scale
Reviewed by									
Processed by			Approved by			Total page(s)	Page		

GDF46-18Z/1.5 220V Outline diagram



GDF46-18Z/1.5

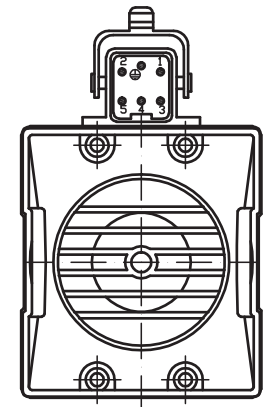
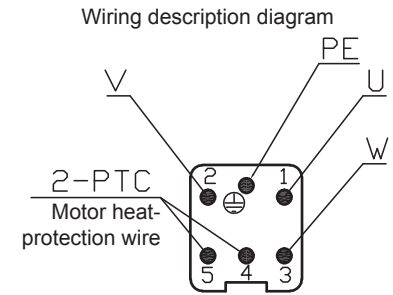
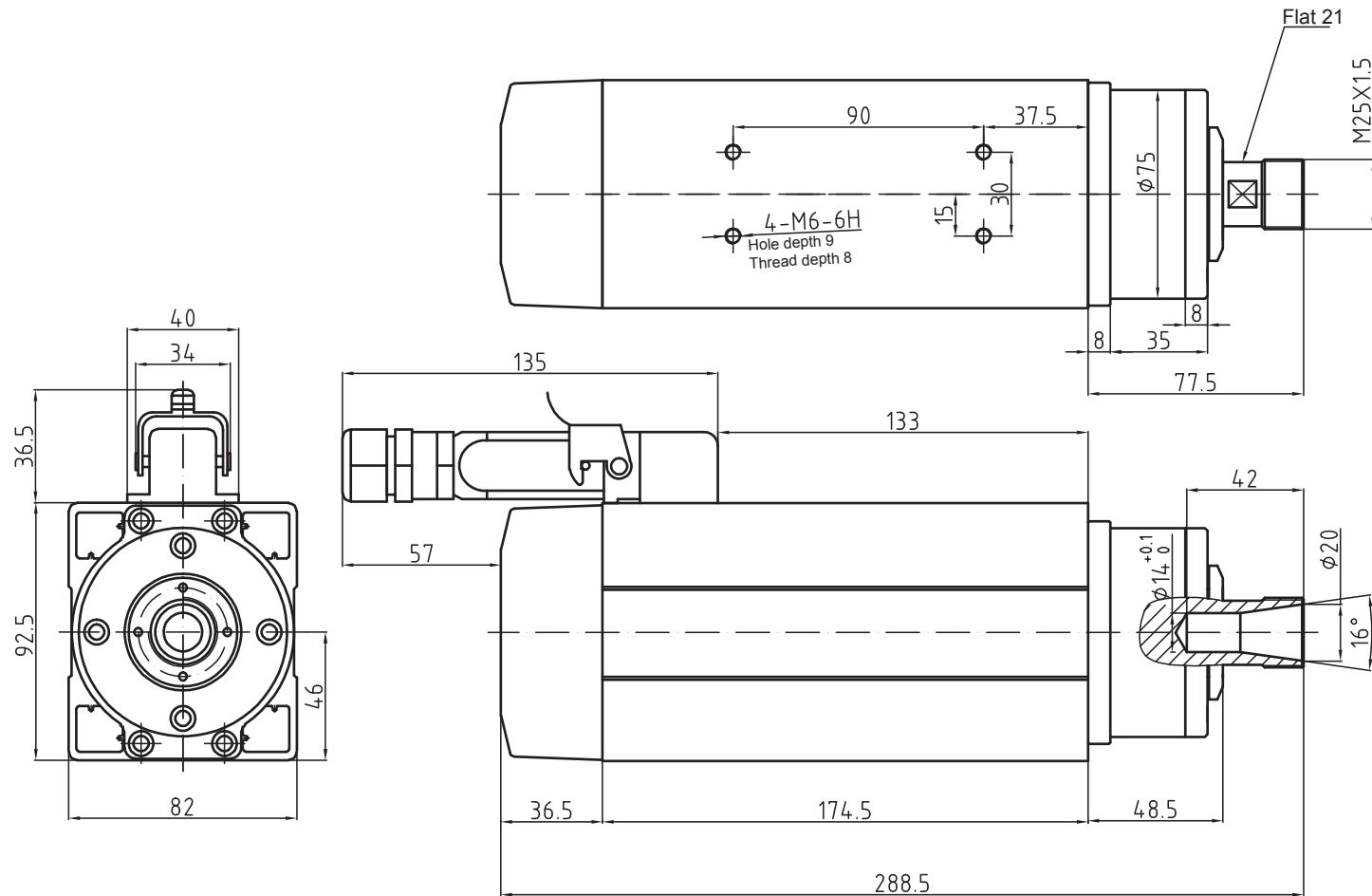
Power	1.5 kw	Weight: 6KG
Voltage	220 V	ER nut: ER20
Current	5.6 A	Cooling method: air cooling
Frequency	300 Hz	Bearing lubrication method: grease lubrication
Rotating speed	18000 r/min	High-precision angular contact ball bearing: 2×7005C P4/1×6002V P5

Rotating direction: anticlockwise from the shaft extension end

Special attention: thread locking adhesive shall be applied or the spring washer shall be added to prevent the looseness during the installation of the fastening screw!

PTC single-core thermistor parameter	
DC power supply	Maximum DC25V/100mA
-20~25℃	≤100Ω
≤90℃	≤250Ω
105℃	≤550Ω
110℃	Rated operating temperature
115℃	≥1330Ω
≥125℃	≥4KΩ
≤160℃	Maximum storage temperature

GDF46-18Z/2.2 220V Outline diagram



GDF46-18Z/2.2

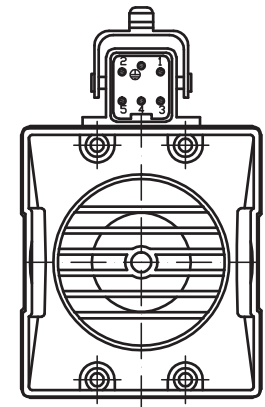
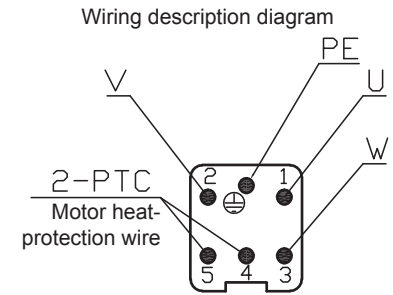
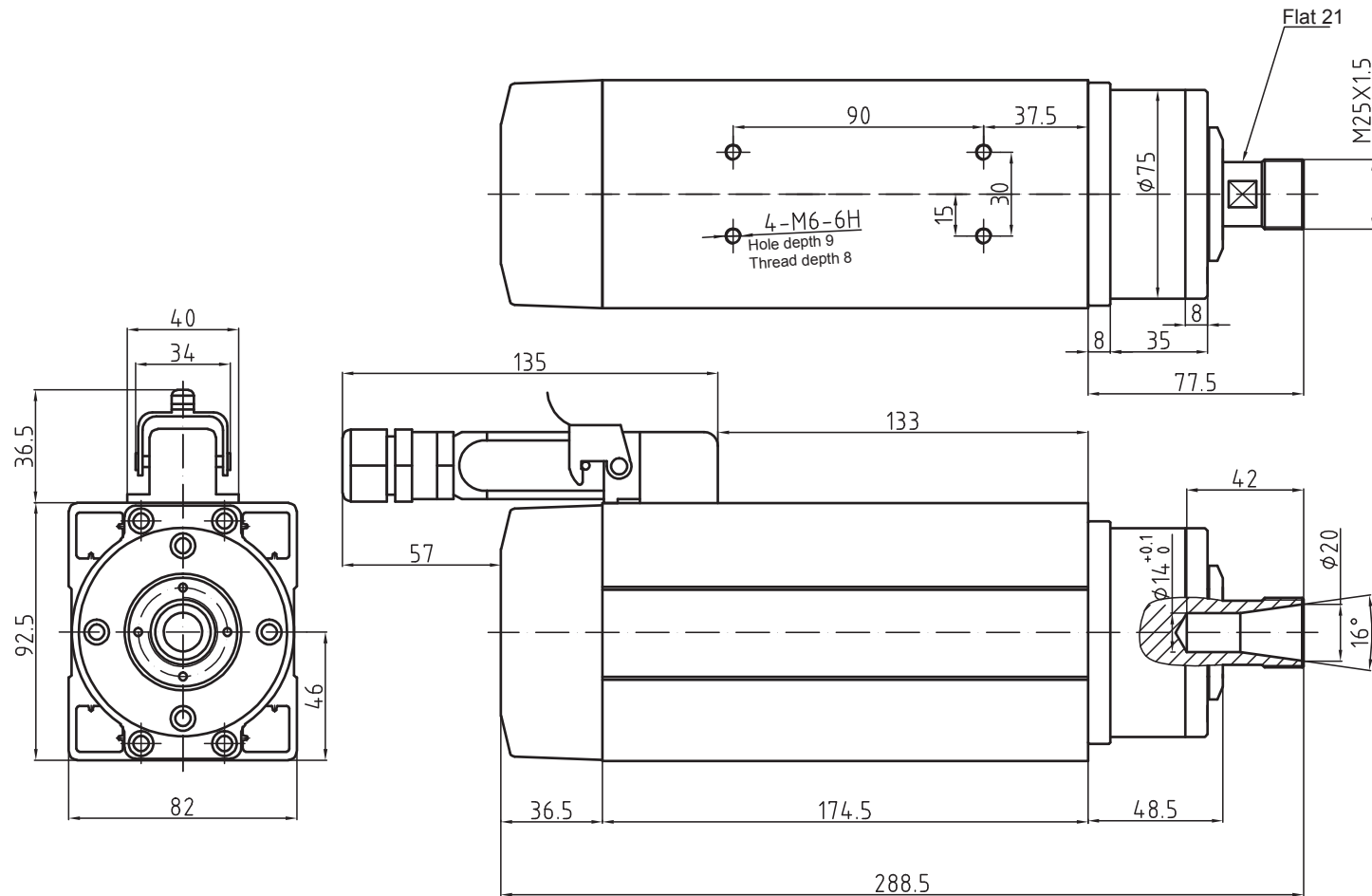
Power 2.2 kw Weight: 7KG
 Voltage 220 V ER nut: ER20
 Current 7.8 A Cooling method: air cooling
 Frequency 300 Hz Bearing lubrication method: grease lubrication
 Rotating speed 18000 r/min High-precision angular contact ball bearing: 2×7005C P4/1×6002V P5

Rotating direction: anticlockwise from the shaft extension end

Special attention: thread locking adhesive shall be applied or the spring washer shall be added to prevent the looseness during the installation of the fastening screw!

PTC single-core thermistor parameter	
DC power supply	Maximum DC25V/100mA
-20~25℃	≤100Ω
≤90℃	≤250Ω
105℃	≤550Ω
110℃	Rated operating temperature
115℃	≥1330Ω
≥125℃	≥4KΩ
≤160℃	Maximum storage temperature

GDF46-18Z/2.2 380V Outline diagram



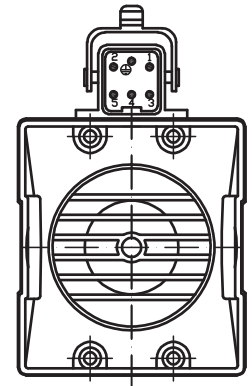
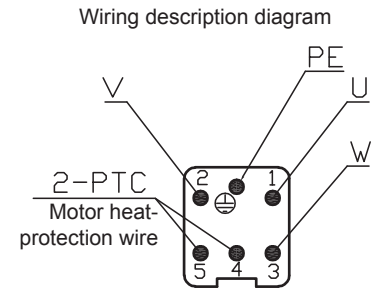
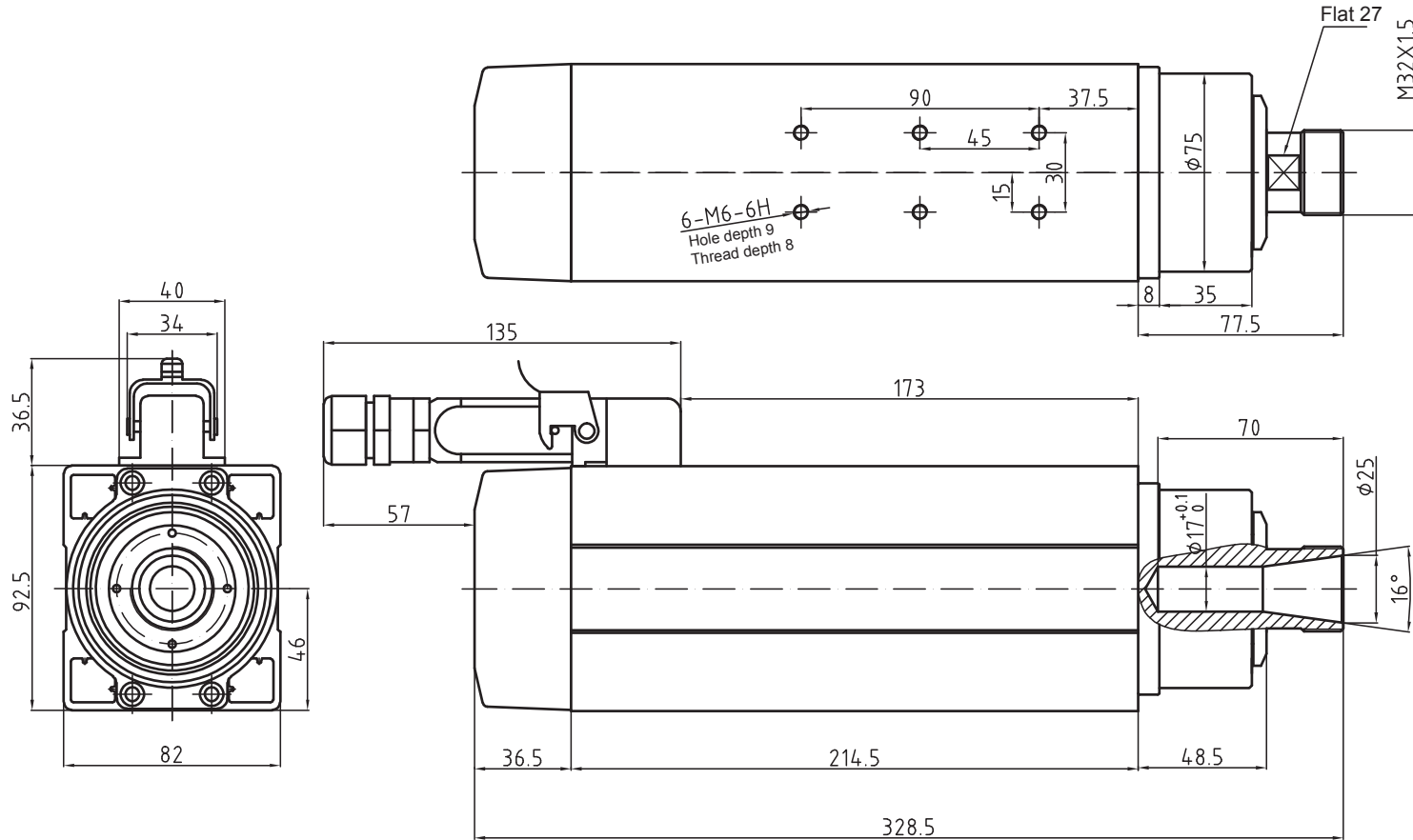
GDF46-18Z/2.2

Power 2.2 kw Weight: 7KG
 Voltage 380 V ER nut: ER20
 Current 4.4 A Cooling method: air cooling
 Frequency 300 Hz Bearing lubrication method: grease lubrication
 Rotating speed 18000 r/min High-precision angular contact ball bearing: 2×7005C P4/1×6002V P5
 Rotating direction: anticlockwise from the shaft extension end

Special attention: thread locking adhesive shall be applied or the spring washer shall be added to prevent the looseness during the installation of the fastening screw!

PTC single-core thermistor parameter	
DC power supply	Maximum DC25V/100mA
-20~25℃	≤100Ω
≤90℃	≤250Ω
105℃	≤550Ω
110℃	Rated operating temperature
115℃	≥1330Ω
≥125℃	≥4KΩ
≤160℃	Maximum storage temperature

GDF46-18Z/3.5 380V Outline diagram



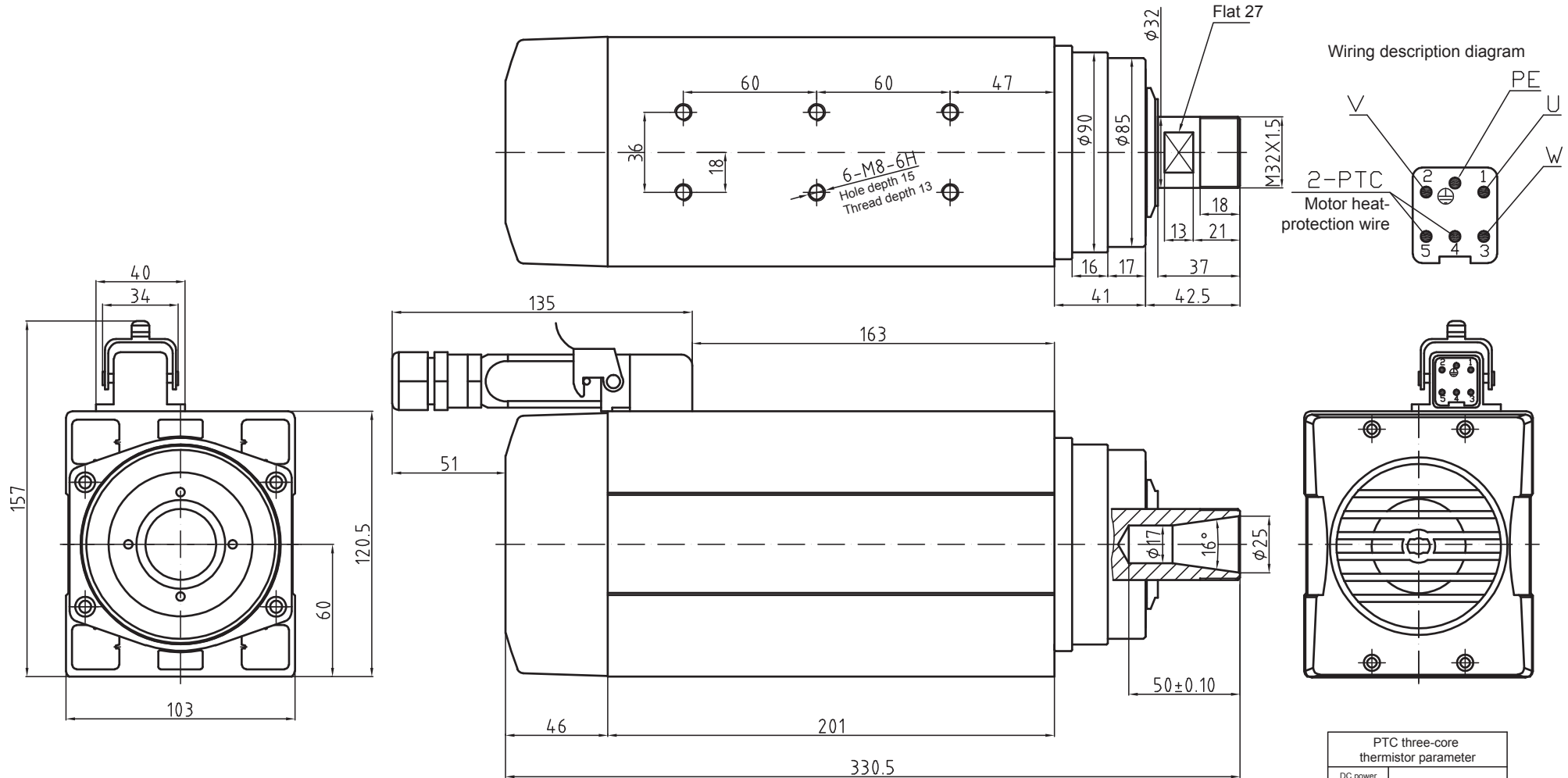
GDF46-18Z/3.5

Power	3.5 kw	Weight: 8KG
Voltage	380 V	ER nut: ER25
Current	7.0 A	Cooling method: air cooling
Frequency	300 Hz	Bearing lubrication method: grease lubrication
Rotating speed	18000 r/min	High-precision angular contact ball bearing: 2×7007C P4/2×7002C P4
		Rotating direction: anticlockwise from the shaft extension end

Special attention: thread locking adhesive shall be applied or the spring washer shall be added to prevent the looseness during the installation of the fastening screw!

PTC single-core thermistor parameter	
DC power supply	Maximum DC25V/100mA
-20~25℃	≤100Ω
≤90℃	≤250Ω
105℃	≤550Ω
110℃	Rated operating temperature
115℃	≥1330Ω
≥125℃	≥4KΩ
≤160℃	Maximum storage temperature

GDF60-18Z/4.5-ER25 220V Outline diagram



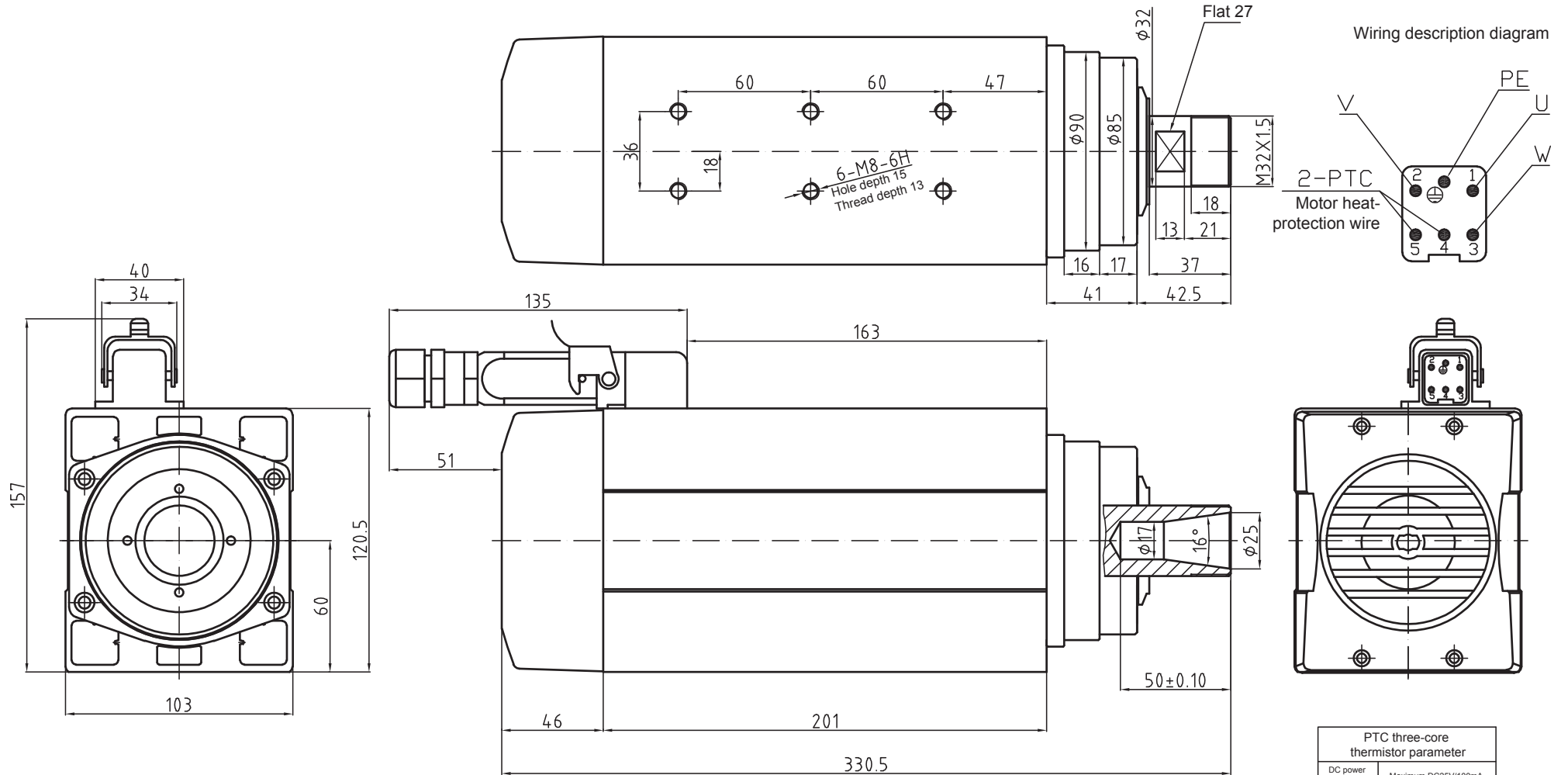
GDF60-18Z/4.5-ER25

Power	4.5 kw	Weight: 12KG
Voltage	220 V	ER nut: ER25
Current	15.0 A	Cooling method: air cooling
Frequency	300 Hz	Bearing lubrication method: grease lubrication
Rotating speed	18000 r/min	High-precision angular contact ball bearing: 2×7007C P4/2×7002C P4
		Rotating direction: anticlockwise from the shaft extension end

Special attention: thread locking adhesive shall be applied or the spring washer shall be added to prevent the looseness during the installation of the fastening screw!

PTC three-core thermistor parameter	
DC power supply	Maximum DC25V/100mA
-20~25℃	≤300Ω
≤90℃	≤750Ω
105℃	≤1650Ω
110℃	Rated operating temperature
115℃	≥3990Ω
≥125℃	≥12KΩ
≤160℃	Maximum storage temperature

GDF60-18Z/4.5-ER25 380V Outline diagram



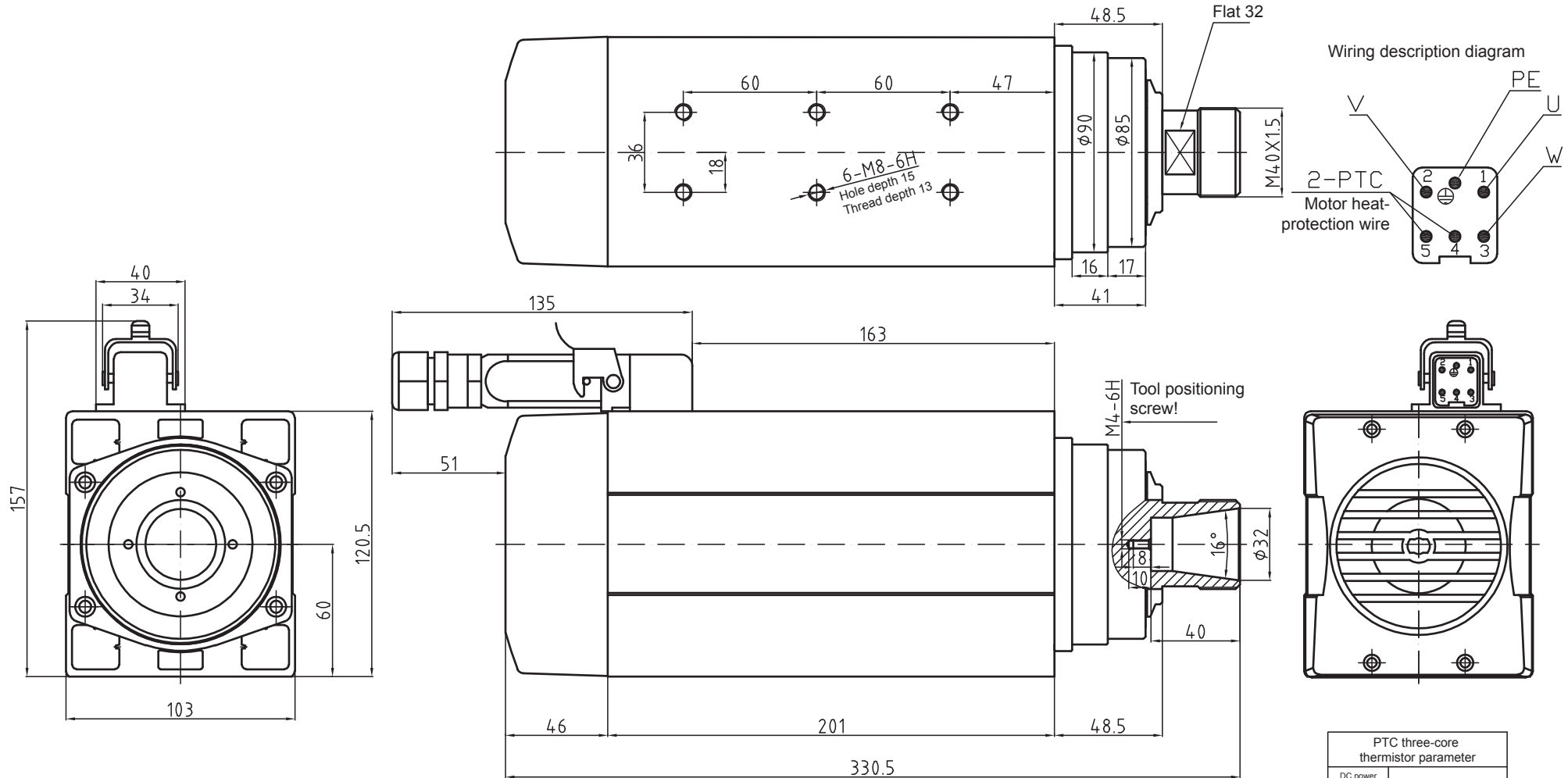
GDF60-18Z/4.5-ER25

Power	4.5 kw	Weight: 12KG
Voltage	380 V	ER nut: ER25
Current	9.0 A	Cooling method: air cooling
Frequency	300 Hz	Bearing lubrication method: grease lubrication
Rotating speed	18000 r/min	High-precision angular contact ball bearing: 2×7007C P4/2×7002C P4
Rotating direction: anticlockwise from the shaft extension end		

Special attention: thread locking adhesive shall be applied or the spring washer shall be added to prevent the looseness during the installation of the fastening screw!

PTC three-core thermistor parameter	
DC power supply	Maximum DC25V/100mA
-20~25℃	≤300Ω
≤90℃	≤750Ω
105℃	≤1650Ω
110℃	Rated operating temperature
115℃	≥3990Ω
≥125℃	≥12KΩ
≤160℃	Maximum storage temperature

GDF60-18Z/4.5 220V Outline diagram



GDF60-18Z/4.5

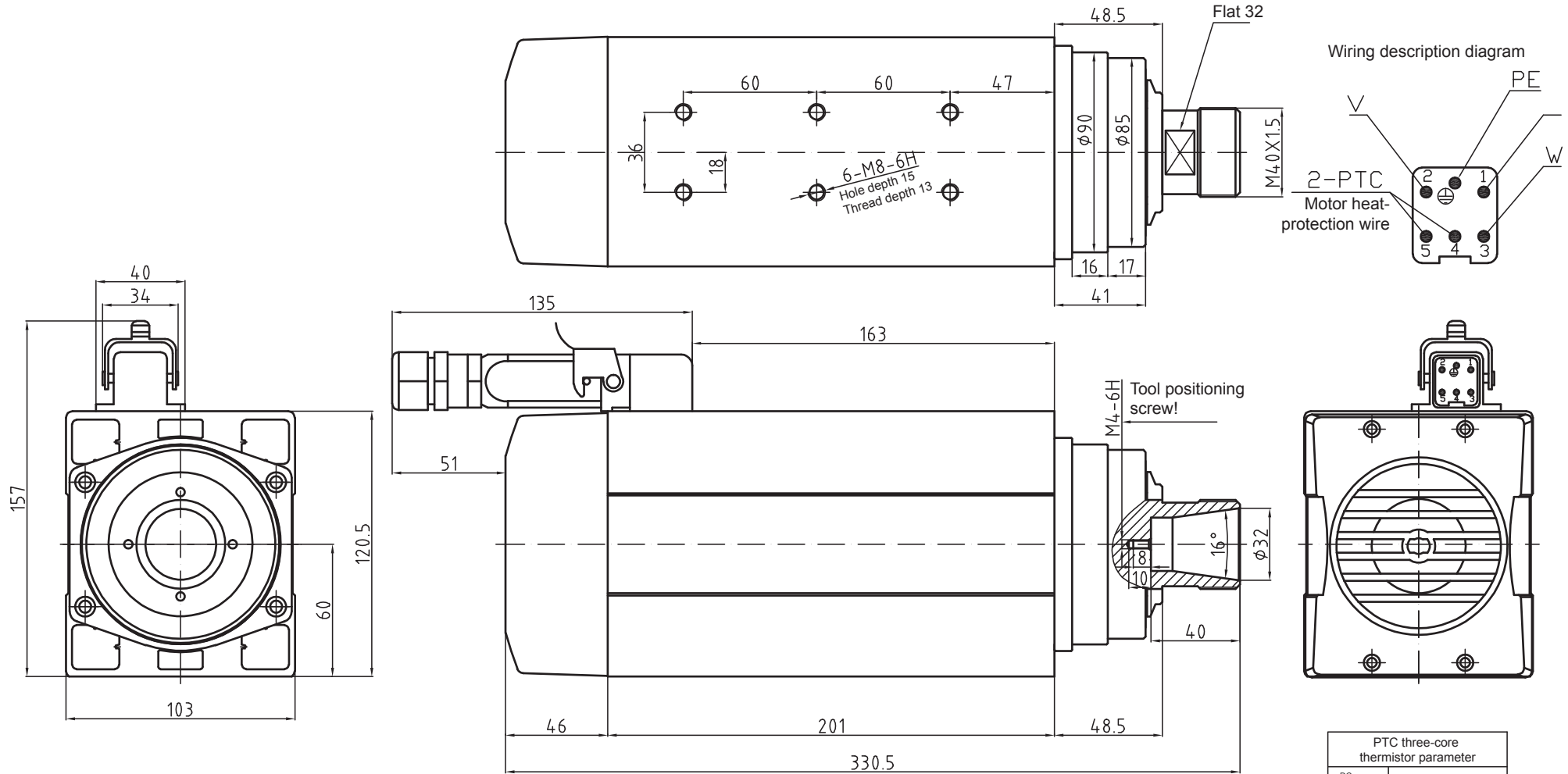
Power	4.5 kw	Weight: 12KG
Voltage	220 V	ER nut: ER32
Current	15.0 A	Cooling method: air cooling
Frequency	300 Hz	Bearing lubrication method: grease lubrication
Rotating speed	18000 r/min	High-precision angular contact ball bearing: 2×7008C P4/2×7002C P4

Rotating direction: anticlockwise from the shaft extension end

Special attention: thread locking adhesive shall be applied or the spring washer shall be added to prevent the looseness during the installation of the fastening screw!

PTC three-core thermistor parameter	
DC power supply	Maximum DC25V/100mA
-20~25℃	≤300Ω
≤90℃	≤750Ω
105℃	≤1650Ω
110℃	Rated operating temperature
115℃	≥3990Ω
≥125℃	≥12KΩ
≤160℃	Maximum storage temperature

GDF60-18Z/4.5 380V Outline diagram



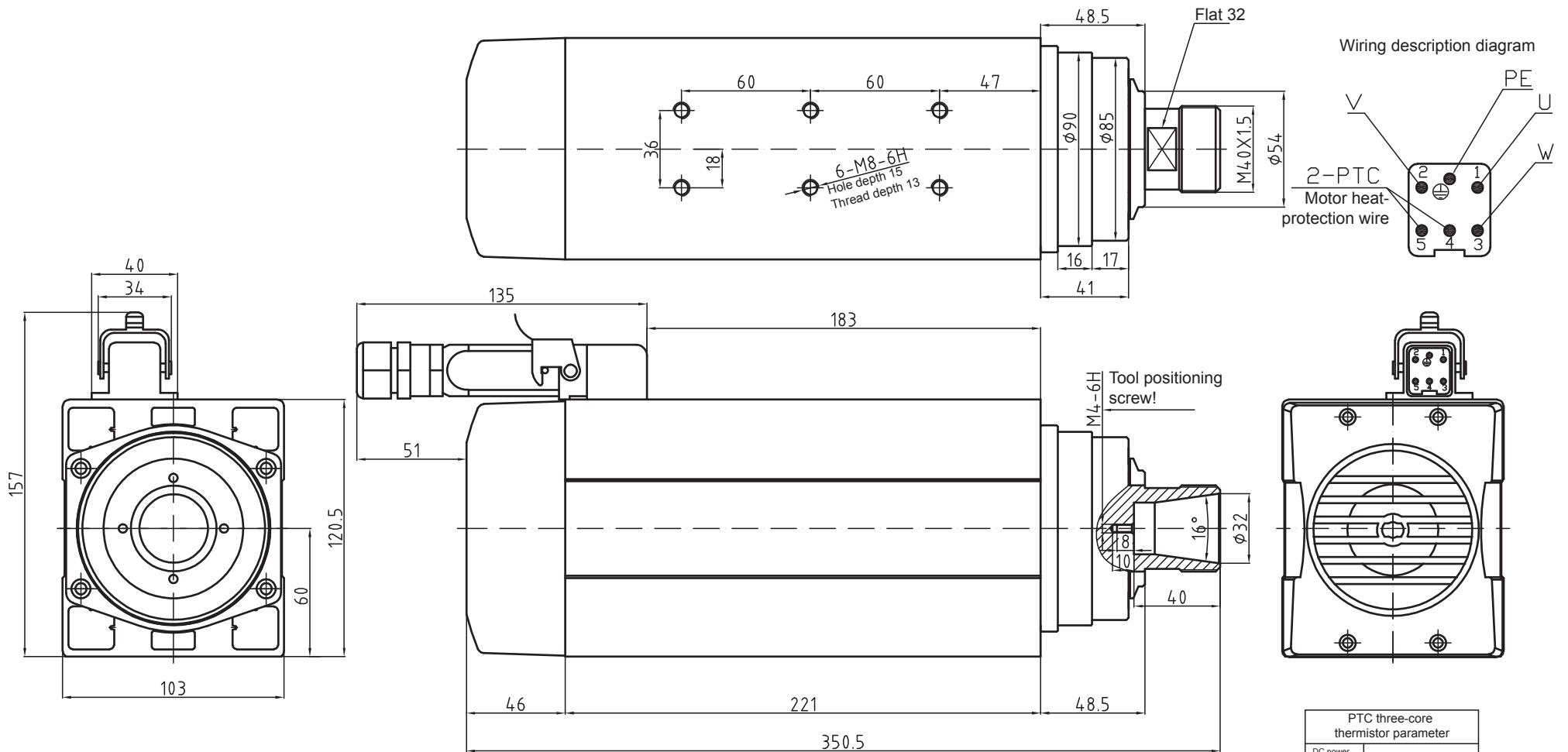
GDF60-18Z/4.5

Power	4.5 kw	Weight: 12KG
Voltage	380 V	ER nut: ER32
Current	9.0 A	Cooling method: air cooling
Frequency	300 Hz	Bearing lubrication method: grease lubrication
Rotating speed	18000 r/min	High-precision angular contact ball bearing: 2×7008C P4/2×7002C P4
		Rotating direction: anticlockwise from the shaft extension end

Special attention: thread locking adhesive shall be applied or the spring washer shall be added to prevent the looseness during the installation of the fastening screw!

PTC three-core thermistor parameter	
DC power supply	Maximum DC25V/100mA
-20~25℃	≤300Ω
≤90℃	≤750Ω
105℃	≤1650Ω
110℃	Rated operating temperature
115℃	≥3990Ω
≥125℃	≥12KΩ
≤160℃	Maximum storage temperature

GDF60-18Z/6.0 220V Outline diagram



GDF60-18Z/6.0

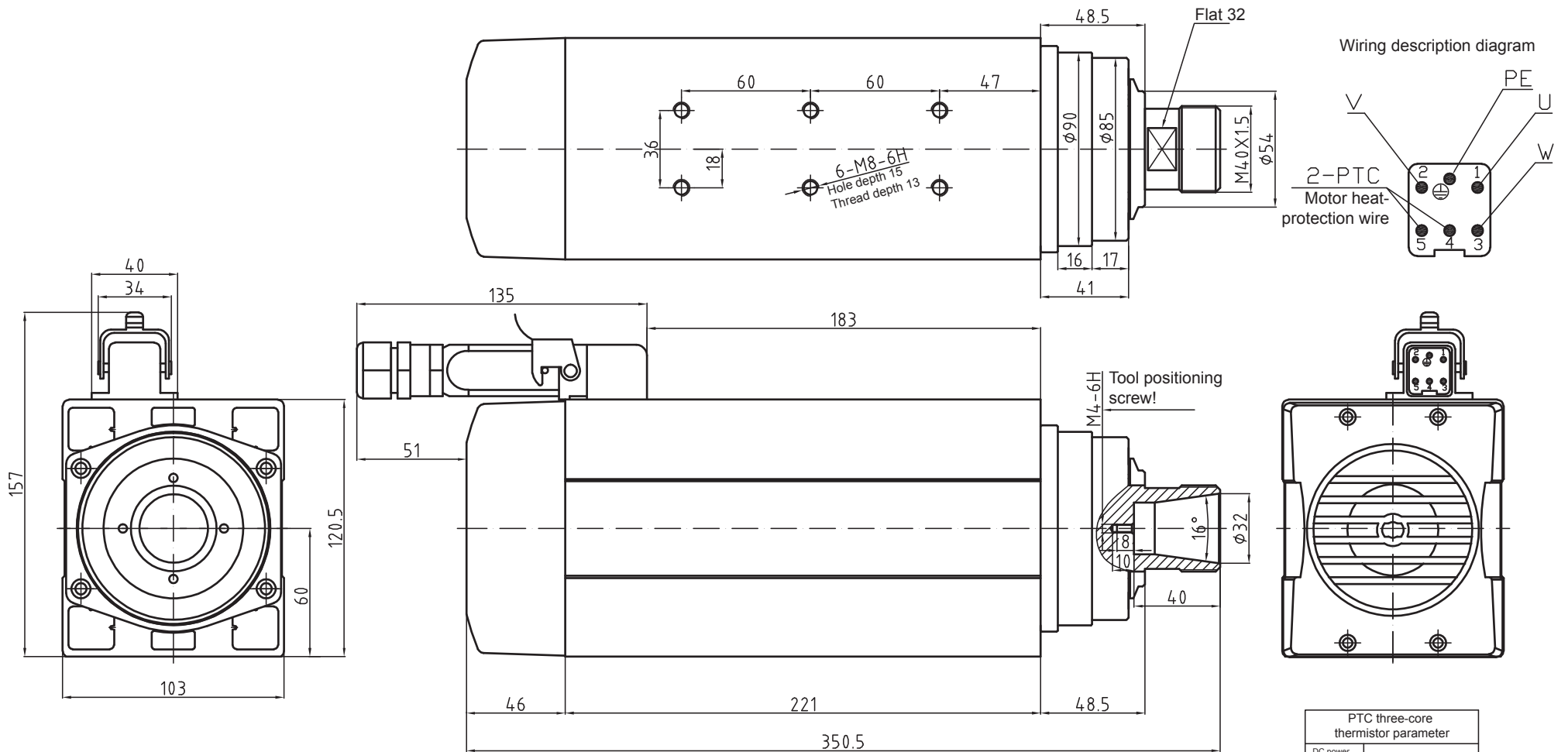
Power	6.0 kw	Weight: 13KG
Voltage	220 V	ER nut: ER32
Current	21.0 A	Cooling method: air cooling
Frequency	300 Hz	Bearing lubrication method: grease lubrication
Rotating speed	18000 r/min	High-precision angular contact ball bearing: 2×7008C P4/2×7002C P4

Rotating direction: anticlockwise from the shaft extension end

Special attention: thread locking adhesive shall be applied or the spring washer shall be added to prevent the looseness during the installation of the fastening screw!

PTC three-core thermistor parameter	
DC power supply	Maximum DC25V/100mA
-20~25℃	≤300Ω
≤90℃	≤750Ω
105℃	≤1650Ω
110℃	Rated operating temperature
115℃	≥3990Ω
≥125℃	≥12KΩ
≤160℃	Maximum storage temperature

GDF60-18Z/6.0 380V Outline diagram



GDF60-18Z/6.0

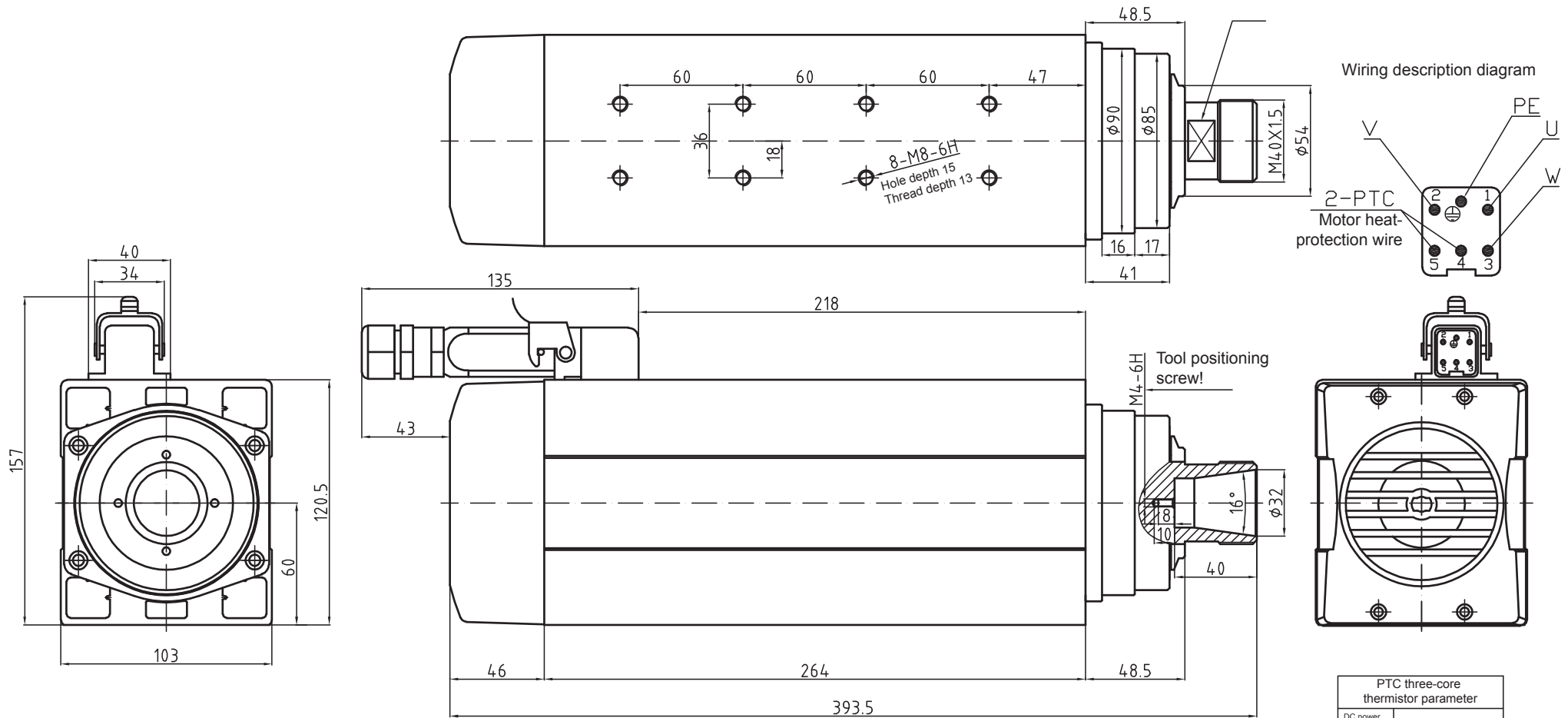
Power	6.0 kw	Weight: 13KG
Voltage	380 V	ER nut: ER32
Current	12.0 A	Cooling method: air cooling
Frequency	300 Hz	Bearing lubrication method: grease lubrication
Rotating speed	18000 r/min	High-precision angular contact ball bearing: 2×7008C P4/2×7002C P4

Rotating direction: anticlockwise from the shaft extension end

Special attention: thread locking adhesive shall be applied or the spring washer shall be added to prevent the looseness during the installation of the fastening screw!

PTC three-core thermistor parameter	
DC power supply	Maximum DC25V/100mA
-20~25℃	≤300Ω
≤90℃	≤750Ω
105℃	≤1650Ω
110℃	Rated operating temperature
115℃	≥3990Ω
≥125℃	≥12KΩ
≤160℃	Maximum storage temperature

GDF60-18Z/7.5 380V Outline diagram



GDF60-18Z/7.5

Power	7.5 kw	Weight: 16KG
Voltage	380 V	ER nut: ER32
Current	15.0 A	Cooling method: air cooling
Frequency	300 Hz	Bearing lubrication method: grease lubrication
Rotating speed	18000 r/min	High-precision angular contact ball bearing: 2×7008C P4/2×7004C P4
		Rotating direction: anticlockwise from the shaft extension end

Special attention: thread locking adhesive shall be applied or the spring washer shall be added to prevent the looseness during the installation of the fastening screw!

PTC three-core thermistor parameter	
DC power supply	Maximum DC25V/100mA
-20~25℃	≤300Ω
≤90℃	≤750Ω
105℃	≤1650Ω
110℃	Rated operating temperature
115℃	≥3990Ω
≥125℃	≥12KΩ
≤160℃	Maximum storage temperature