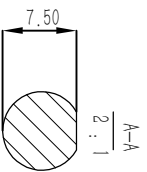
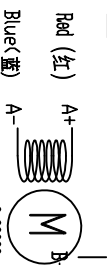


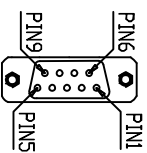
SCALE 1:2



MOTOR CONNECTIONS



Encoder pin definitions



PIN NO#	DESCRIPTION	COLOR(颜色)	DESCRIPTION	COMMON RATINGS	SPECIFICATION	
PIN1	GROUND	BLACK(黑色)	POWER OV DC	STEP ANGLE	1.8°	
PIN2	VCC	RED(红色)	POWER 5V DC	POSITION ACCURACY	1.8° ±0.09°	
PIN3	PA+	YELLOW(黄)	ENCODER A PLUS	NUMBER OF PHASE	2	
PIN4	PA-	GREEN(绿)	ENCODER A MINUS	TEMP RISE(MAX)	80° C	
PIN5	PB+	BLUE(蓝)	ENCODER B PLUS	DIELECTRIC STRENGTH	500VDC	
PIN6	PB-	WHITE(白)	ENCODER B MINUS	INSULATION RESISTANCE	100MΩ(M/500VDC)	
PIN7	SHIELDED	SHIELDED(屏蔽)	SHIELDED	RADIAL PLAY	MAX0.025MM(CAD4503)	
PIN8	NC	NC	NC	AXIAL PLAY	MAX0.075MM(CAD9203)	
PIN9	NC	NC	NC	INSULATION CLASSE	B	

比例	视图方向	产品名称	产品系列	混合步进伺服	日期	审核
1:1	60度相角环	6011887EC-1000-LS	混合步进伺服			
产品名称		深圳市杰美康机电有限公司				
公司系列		Shenzhen Just Motion Control				
绘图		Electromechanics Co., LTD				
审核		www.jmc-motion.com				

