

Key Features:

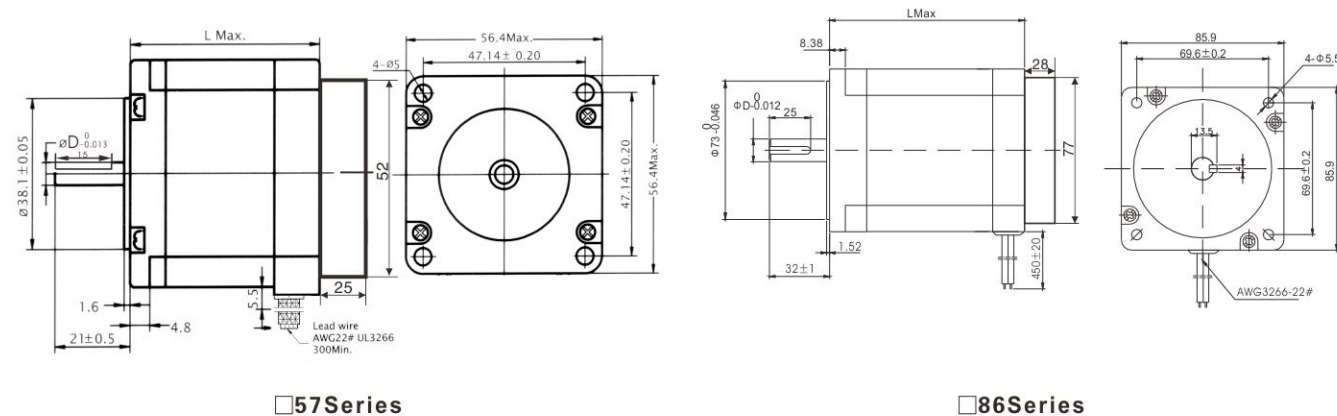
- Low Noise
- Smooth Operation
- High Torque
- Higher Acceleration Ability



2 phase hybrid stepper motor

Model	Nema	Step Angle (deg)	Holding torque (N.m)	Current Phase (A)	Resistance phase (ohms)	Inductance phase (mH)	Detent Torque (gcm)	Rotor Inertia (g-cm ²)	Insulation Class	Lead Wire Numbers (g-cm ²)	Weight (kg)	Length (mm)	Shaft (mm)
42J1825-404	17	1.8	0.17	0.4	24	36	200	20	B	4	0.15	25	5
42J1840-408	17	1.8	0.4	0.8	7.5	10	150	57	B	4	0.21	40	5
42J1848-810	17	1.8	0.34	1.0	4.6	4.0	200	82	B	8	0.34	48	5
42J1848-425	17	1.8	0.5	2.5	1.3	2.7	200	82	B	4	0.34	48	5
42J1860-417	17	1.8	0.85	1.7	2.5	6.5	300	117	B	4	0.50	58	5
57J1841-420	23	1.8	0.75	2.0	1.4	3.8	220	157	B	4	0.4	43	6.35
57J1854-828	23	1.8	0.85	2.8	0.8	1.2	400	280	B	8	0.6	56	6.35
57J1876-447	23	1.8	2.0	4.7	0.37	1.75	700	480	B	4	1.05	76	8
57J1880-450	23	1.8	2.2	5.0	0.4	1.8	700	520	B	4	1.15	80	8
57J1880-830	23	1.8	2.0	3.0	0.45	1.8	700	480	B	8	1.1	80	8
86J1865-828	34	1.8	3.5	6.3	0.24	1.7	800	950	B	8	2	66	9.5
86J1880-842	34	1.8	4.5	4.2	0.58	4.0	1300	1400	B	8	2.3	78	12.7
86J1880-460	34	1.8	4.5	6.0	0.34	2.5	1300	1800	B	4	2.1	78	12.7
86J18101-450	34	1.8	6.3	6.0	0.56	6.6	1600	2300	B	4	3.25	99	12.7
86J18118-460	34	1.8	8.2	6.0	0.52	4.8	1600	3600	B	4	3.6	120	12.7
86J18118-842	34	1.8	8.5	6.0	0.56	3.0	2500	2700	B	8	3.8	118	12.7
86J18156-845	34	1.8	12	6.0	0.72	5.5	4000	4000	B	8	5.4	156	15.875
110J18115-460	42	1.8	11	6.0	0.8	10.0	3000	6000	B	4	5.8	99	19
110J18150-460	42	1.8	21	6.0	0.9	17	6000	11000	B	4	8.4	150	19
110J18165-460	42	1.8	24	6.0	0.8	14	7500	125000	B	4	9.5	165	19

Mechanical Dimension (mm)



3 phase hybrid stepper motor

Model	Nema	Step Angle (deg)	Holding torque (N.m)	Current Phase (A)	Resistance phase (ohms)	Inductance phase (mH)	Detent Torque (gcm)	Rotor Inertia (g-cm ²)	Insulation Class	Lead Wire Numbers (g-cm ²)	Weight (kg)	Length (mm)	Shaft (mm)
57J1250-635	23	1.2	0.9	3.5	0.77	1.8	400	300	B	6	0.75	56	6.35
57J1276-658	23	1.2	1.5	5.2	0.86	2	680	480	B	6	1.1	79	8
57J1285-658	23	1.2	1.8	5.2	1.2	2	800	550	B	6	1.2	85	8
86J1270-650	34	1.2	2.8	5.0	0.75	5	1000	1100	B	6	1.7	70	12
86J12103-650	34	1.2	4.5	4.5	1.4	3.9	2000	2340	B	6	2.85	100	12
86J12126-623	34	1.2	6.8	2.3	5.8	22	3000	3500	B	6	4.0	126	14
86J12126-650	34	1.2	6.8	5.2	1.62	6	3000	3500	B	6	4.0	126	14
110J12161-360	42	1.2	12	4.5	0.76	11.5	4000	11900	B	3	7.1	161	19
110J12185-360	42	1.2	16	6.0	1.28	19	5500	14800	B	3	8.8	185	19
110J12220-360	42	1.2	20	6.8	1.24	22	6800	19600	B	3	11	220	19
130J12188-368	51	1.2	24	6.8	0.96	16.2	10000	26870	B	3	14	188	19
130J12220-368	51	1.2	28	6.8	1.17	19	16000	33970	B	3	17	220	19
130J12252-368	51	1.2	35	6.8	1.39	24	24000	41400	B	3	19	252	19
130J12280-368	51	1.2	50	6.8	1.02	18.3	28000	47300	B	3	20.5	280	19

Mechanical Dimension (mm)

